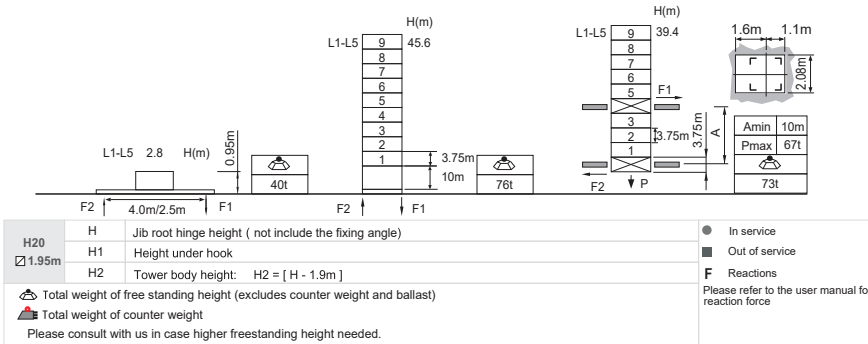


Jib root hinge height



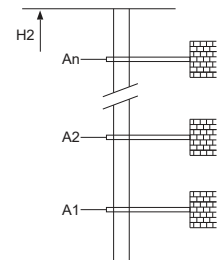
Load diagrams

R	falls	R(C _{MAX})	C _{MAX}	m	10	12	15	17	20	22	25	27	30	32	35	37	40	42	45
45m	⚖️	4.2~27.7 [85.0]	10	t	10.0	10.0	10.0	10.0	10.0	10.0	10.0	10.0	8.7	7.8	6.6	5.9	5.1	4.5	3.7
	⚖️	4.2~21.1 [85.0]	15	t	15.0	15.0	15.0	15.0	15.0	14.1	11.6	10.3	8.7	7.8	6.6	5.9	5.1	4.5	3.7
40m	⚖️	4.2~16.7 [85.0]	20	t	20.0	20.0	20.0	19.9	16.1	14.1	11.6	10.3	8.7	7.8	6.6	5.9	5.1	4.5	3.7
	⚖️	4.0~29.1 [85.0]	10	t	10.0	10.0	10.0	10.0	10.0	10.0	10.0	10.0	9.5	8.6	7.4	6.7	5.5		
35m	⚖️	4.0~21.8 [85.0]	15	t	15.0	15.0	15.0	15.0	15.0	14.9	12.5	11.1	9.5	8.6	7.4	6.7	5.5		
	⚖️	4.0~17.5 [85.0]	20	t	20.0	20.0	20.0	20.0	16.9	14.9	12.5	11.1	9.5	8.6	7.4	6.7	5.5		
30m	⚖️	3.7~29.1 [85.0]	10	t	10.0	10.0	10.0	10.0	10.0	10.0	10.0	10.0	9.5	8.6	7.4				
	⚖️	3.7~17.5 [85.0]	15	t	15.0	15.0	15.0	15.0	15.0	14.9	12.5	11.1	9.5	8.6	7.4				
25m	⚖️	3.4~21.8 [85.0]	10	t	10.0	10.0	10.0	10.0	10.0	10.0	10.0	10.0	9.5						
	⚖️	3.4~17.5 [85.0]	15	t	15.0	15.0	15.0	15.0	16.9	14.9	12.5	11.1	9.5						
	⚖️	3.1~25.0 [85.0]	10	t	10.0	10.0	10.0	10.0	10.0	10.0	10.0	10.0							
	⚖️	3.1~21.8 [85.0]	15	t	15.0	15.0	15.0	15.0	15.0	14.9	12.5								
	⚖️	3.1~17.5 [85.0]	20	t	20.0	20.0	20.0	20.0	16.9	14.9	12.5								

Anchorage

An[m]	A1	A2	A3	A4	A5	A6	A7	A8	A9	A10
	41.8	68.1	94.3	120.6	146.8	173.1	199.3	225.6	251.8	278.1
H2 [m]	73.7	100.0	122.5	148.7	175.0	201.2	227.5	253.7	280.0	306.2 ※

※ Over this height please contact us



Mechanisms

⬆️	100LVF50KL	⚙️	m/min	0 ~ 44	0 ~ 88	75kW	800m >800m※
		t	10.0	5.0			
⬆️	120LVF50KL-Q	⚙️	m/min	0 ~ 29.3	0 ~ 58.6	90kW	1000m >1000m※
		t	15.0	7.5			
⬆️	75VVF40KL	⚙️	m/min	0 ~ 22	0 ~ 44	55kW	
		t	20.0	10.0			
⬆️	RVC95	⚙️	m/min	0 ~ 45	0 ~ 90	2x5.5kW	
		t	10.0	5.0			
⚡	75VVF40KL	⚙️	m/min	0 ~ 30	0 ~ 60	55kW	
		t	15.0	7.5			
⚡	RVC95	⚙️	m/min	0 ~ 22.5	0 ~ 45	2x5.5kW	kVA
		t	20.0	10.0			
⚡	RVC95	⚙️	rpm	15~80	1min40s	2x5.5kW	
		t	0 ~ 0.8				
⚡	RVC95	⚙️	rpm	380V 50Hz(5%)	100LVF50KL 170kVA	2x5.5kW	kVA
		t	380V 60Hz(5%)	120LVF50KL-P 185kVA			
⚡	RVC95	⚙️	rpm	440V 60Hz(5%)		2x5.5kW	kVA
		t					

※ Please consult us △ Option