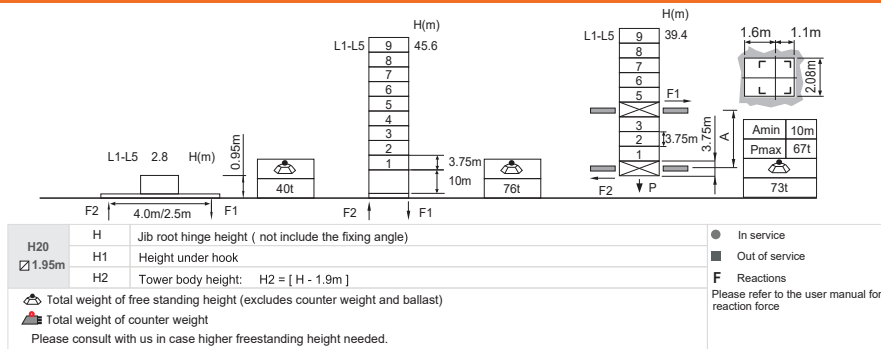


### Jib root hinge height

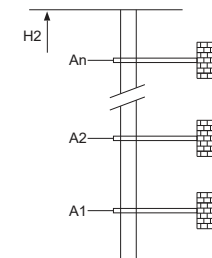


### Load diagrams

R	fall	R(C <sub>MAX</sub> )	C <sub>MAX</sub>	m	10	12	15	17	20	22	25	27	30	32	35	37	40	42	45
45m	4.2~24.6	[ 60.3 ]	12	t	12.0	12.0	12.0	12.0	12.0	12.0	11.6	10.3	8.7	7.8	6.6	5.9	5.1	4.5	3.7
45m	4.2~18.4	[ 68.9 ]	18	t	18.0	18.0	18.0	18.0	16.1	14.1	11.6	10.3	8.7	7.8	6.6	5.9	5.1	4.5	3.7
45m	4.2~14.7	[ 73.8 ]	24	t	24.0	24.0	23.3	19.9	16.1	14.1	11.6	10.3	8.7	7.8	6.6	5.9	5.1	4.5	3.7
40m	4.0~25.5	[ 54.5 ]	12	t	12.0	12.0	12.0	12.0	12.0	12.0	11.1	9.5	8.6	7.4	6.7	5.5			
40m	4.0~19.0	[ 65.0 ]	18	t	18.0	18.0	18.0	18.0	16.9	14.9	12.5	11.1	9.5	8.6	7.4	6.7	5.5		
40m	4.0~15.1	[ 71.0 ]	24	t	24.0	24.0	24.0	20.7	16.9	14.9	12.5	11.1	9.5	8.6	7.4	6.7	5.5		
35m	3.7~25.5	[ 48.3 ]	12	t	12.0	12.0	12.0	12.0	12.0	12.0	11.1	9.5	8.6	7.4					
35m	3.7~19.0	[ 61.2 ]	18	t	18.0	18.0	18.0	18.0	16.9	14.9	12.5	11.1	9.5	8.6	7.4				
35m	3.7~15.1	[ 68.1 ]	24	t	24.0	24.0	24.0	20.7	16.9	14.9	12.5	11.1	9.5	8.6	7.4				
30m	3.4~25.5	[ 38.7 ]	12	t	12.0	12.0	12.0	12.0	12.0	12.0	11.1	9.5							
30m	3.4~19.0	[ 55.7 ]	18	t	18.0	18.0	18.0	18.0	16.9	14.9	12.5	11.1	9.5						
30m	3.4~15.1	[ 64.1 ]	24	t	24.0	24.0	24.0	20.7	16.9	14.9	12.5	11.1	9.5						
25m	3.1~25.0	[ 21.6 ]	12	t	12.0	12.0	12.0	12.0	12.0	12.0	12.0								
25m	3.1~19.0	[ 47.0 ]	18	t	18.0	18.0	18.0	18.0	16.9	14.9	12.5								
25m	3.1~15.1	[ 58.4 ]	24	t	24.0	24.0	24.0	20.7	16.9	14.9	12.5								

### Anchorage

An[m]	A1	A2	A3	A4	A5	A6	A7	A8	A9	A10
41.8	68.1	94.3	120.6	146.8	173.1	199.3	225.6	251.8	278.1	
H2 [m]	73.7	100.0	122.5	148.7	175.0	201.2	227.5	253.7	280.0	306.2
※ Over this height please contact us										



### Mechanisms

	120LVF60KL		m/min	0 ~ 36	0 ~ 72	90kW	 1000m >1000m※
			t	12.0	6.0		
			m/min	0 ~ 24	0 ~ 48		
			t	18.0	9.0		
			m/min	0 ~ 18	0 ~ 36		
t	24.0	12.0					
	75VVF40KL	15~80	1min40s			55kW	
	RCV145	rpm	0 ~ 0.8			2x7.5kW	
	380V 50Hz( 5%) 380V 60Hz( 5%) 440V 60Hz( 5%)		120LVF55KL 190kVA				
※ Please consult us							
△ Option							