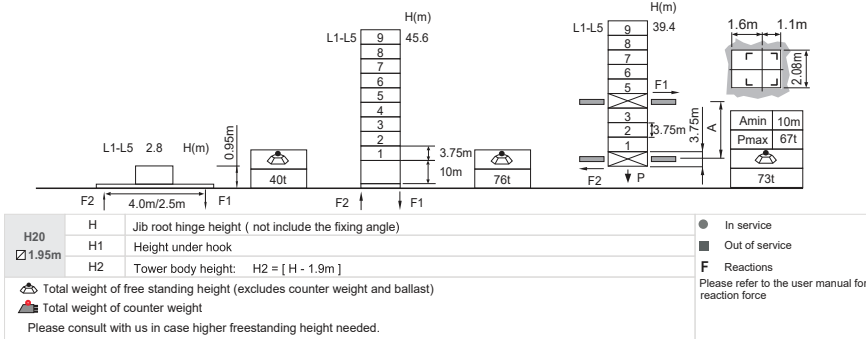


Jib root hinge height



Load diagrams

R	falls	R(C _{MAX})	C _{MAX}	m	10	12	15	17	20	22	25	27	30	32	35	37	40	42	45
45m	☺	4.2~27.7 [55.8]	10	t	10.0	10.0	10.0	10.0	10.0	10.0	10.0	10.0	8.7	7.8	6.6	5.9	5.1	4.5	3.7
	☹	4.2~21.1 [65.2]	15	t	15.0	15.0	15.0	15.0	15.0	14.1	11.6	10.3	8.7	7.8	6.6	5.9	5.1	4.5	3.7
40m	☺	4.2~16.7 [71.1]	20	t	20.0	20.0	20.0	19.9	16.1	14.1	11.6	10.3	8.7	7.8	6.6	5.9	5.1	4.5	3.7
	☹	4.0~29.1 [47.9]	10	t	10.0	10.0	10.0	10.0	10.0	10.0	10.0	10.0	9.5	8.6	7.4	6.7	5.5		
35m	☺	4.0~21.8 [60.7]	15	t	15.0	15.0	15.0	15.0	15.0	14.9	12.5	11.1	9.5	8.6	7.4	6.7	5.5		
	☹	4.0~17.5 [67.4]	20	t	20.0	20.0	20.0	20.0	16.9	14.9	12.5	11.1	9.5	8.6	7.4	6.7	5.5		
30m	☺	3.7~29.1 [39.7]	10	t	10.0	10.0	10.0	10.0	10.0	10.0	10.0	10.0	9.5	8.6	7.4				
	☹	3.7~21.8 [55.9]	15	t	15.0	15.0	15.0	15.0	15.0	14.9	12.5	11.1	9.5	8.6	7.4				
25m	☺	3.4~29.1 [25.5]	10	t	10.0	10.0	10.0	10.0	10.0	10.0	10.0	10.0	9.5	8.6	7.4				
	☹	3.4~17.5 [64.0]	20	t	20.0	20.0	20.0	20.0	16.9	14.9	12.5	11.1	9.5	8.6	7.4				
20m	☺	3.1~21.8 [37.4]	15	t	15.0	15.0	15.0	15.0	15.0	14.9	12.5	11.1	9.5						
	☹	3.1~17.5 [51.6]	20	t	20.0	20.0	20.0	20.0	16.9	14.9	12.5								

Anchorage

An[m]	A1	A2	A3	A4	A5	A6	A7	A8	A9	A10
H2 [m]	41.8	68.1	94.3	120.6	146.8	173.1	199.3	225.6	251.8	278.1
H2 [m]	73.7	100.0	122.5	148.7	175.0	201.2	227.5	253.7	280.0	306.2

※ Over this height please contact us

Mechanisms

100LVF50KL	m/min	0 ~ 44	0 ~ 88	75kW	1000m >1000m※
	t	10.0	5.0		
120LVF50KL-P	m/min	0 ~ 29.3	0 ~ 58.6	90kW	1200m >1200m※
	t	15.0	7.5		
75VVF40KL	m/min	0 ~ 22	0 ~ 44	55kW	
	t	20.0	10.0		
RCV145	m/min	0 ~ 45	0 ~ 90	2x7.5kW	
	t	10.0	5.0		
75VVF40KL	m/min	0 ~ 30	0 ~ 60	55kW	
	t	15.0	7.5		
RCV145	m/min	0 ~ 22.5	0 ~ 45	2x7.5kW	
	t	20.0	10.0		
75VVF40KL	r/min	15~80	1min40s	55kW	
	r/min	0 ~ 0.8			
RCV145	r/min	15~80	1min40s	55kW	
	r/min	0 ~ 0.8			

※ Please consult us △ Option