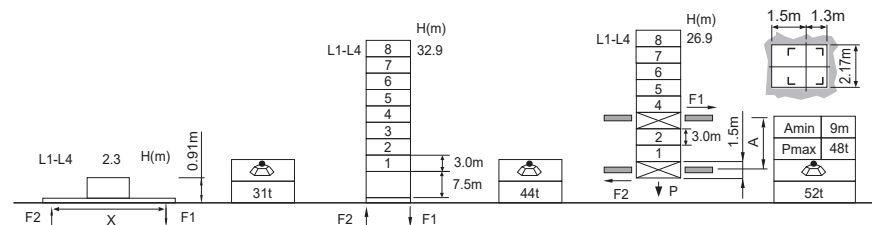


Jib root hinge height



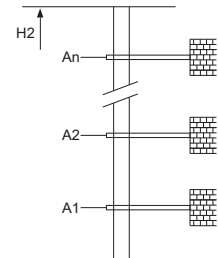
L68B2	H	Jib root hinge height (not include the fixing angle)	● In service
L2.0m	H1	Height under hook	■ Out of service
	H2	Tower body height: $H2 = [H - 1.43m]$	F Reactions
		Total weight of free standing height (excludes counter weight and ballast)	Please refer to the user manual for reaction force
		Total weight of counter weight	
		Please consult with us in case higher freestanding height needed.	

Load diagrams

R	falls	R(C _{MAX})	C _{MAX}	m	10	12	15	17	20	22	25	27	30	32	35	37	40
40m		4.6 ~ 26.5 [50.9]	8	t	8.0	8.0	8.0	8.0	8.0	8.0	8.0	7.8	6.6	5.9	5.1	4.6	4.0
		4.6 ~ 19.8 [62.3]	12	t	12.0	12.0	12.0	12.0	11.8	10.4	8.7	7.8	6.6	5.9	5.1	4.6	4.0
35m		4.6 ~ 15.8 [68.6]	16	t	16.0	16.0	16.0	14.6	11.8	10.4	8.7	7.8	6.6	5.9	5.1	4.6	4.0
		4.1 ~ 26.9 [42.8]	8	t	8.0	8.0	8.0	8.0	8.0	8.0	8.0	7.9	6.8	6.1	5.2		
30m		4.1 ~ 20.0 [57.5]	12	t	12.0	12.0	12.0	12.0	12.0	10.1	8.9	7.9	6.8	6.1	5.2		
		4.1 ~ 15.9 [65.0]	16	t	16.0	16.0	16.0	14.8	12.1	10.1	8.9	7.9	6.8	6.1	5.2		
25m		3.7 ~ 27.2 [29.5]	8	t	8.0	8.0	8.0	8.0	8.0	8.0	8.0	8.0	6.9				
		3.7 ~ 20.2 [50.4]	12	t	12.0	12.0	12.0	12.0	12.0	10.7	9.0	8.1	6.9				
		3.7 ~ 16.1 [60.0]	16	t	16.0	16.0	16.0	14.9	12.2	10.7	9.0	8.1	6.9				
		3.2 ~ 25.0 [16.0]	8	t	8.0	8.0	8.0	8.0	8.0	8.0	8.0						
		3.2 ~ 20.3 [39.0]	12	t	12.0	12.0	12.0	12.0	12.0	10.8	9.1						
		3.2 ~ 16.2 [52.5]	16	t	16.0	16.0	16.0	15.0	12.3	10.8	9.1						

Anchorage

An[m]	A1	A2	A3	A4	A5	A6	A7	A8	A9	A10
	30.0	51.0	72.0	93.0	114.0	135.0	156.0	177.0	-	-
H2 [m]	55.5	76.5	97.5	115.5	136.5	157.5	178.5	199.5	-	-
※ Over this height please contact us										



Mechanisms

	75LVF40KL		m/min	0 ~ 41	0 ~ 82	55kW	
			t	8.0	4.0		
			m/min	0 ~ 27.3	0 ~ 54.6		
			t	12.0	6.0		
	75VVF40KL		m/min	0 ~ 20.5	0 ~ 41	55kW	1000m >1000m※
			t	16.0	8.0		
	RVC95		rpm	0 ~ 0.8	145kVA	2x5.5kW	kVA
	380V 50Hz(5%) 380V 60Hz(5%) 440V 60Hz(5%)						

※ Please consult us

△ Option