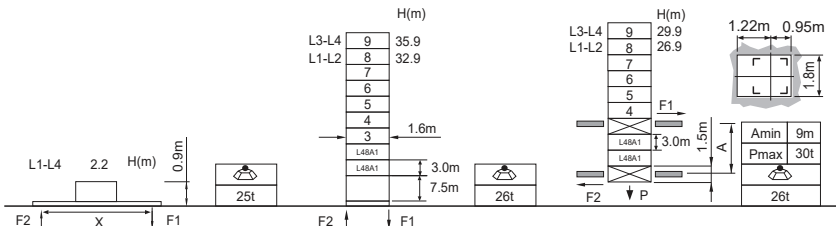


L(m)		H1[m]			A	B	[kg]
		15	85	65			
L1 40	1+2+3+4+5+6+7+8	H1+7.8	H1+37.3	H1+31.2	3	-	7020
L2 35	1+2+3+4+5+6+8	H1+6.5	H1+31.9	H1+26.9	3	-	7020
L3 30	1+2+3+4+5+8	H1+5.1	H1+26.9	H1+22.5	3	-	7020
L4 25	1+2+3+4+8	H1+3.8	H1+22.0	H1+18.2	3	-	7020
①	5.175	②	5.175	③	5.175	④	5.175
⑤	5.175	⑥	5.175	⑦	5.175	⑧	5.175
⑨	5.175	⑩	5.175	⑪	5.175	⑫	5.175
							A=2340kg B= - kg

Jib root hinge height



L46A1	H	Jib root hinge height (not include the fixing angle)
1.6m	H1	Height under hook
	H2	Tower body height: H2 = [H - 1.34m]
Total weight of free standing height (excludes counter weight and ballast)		
Total weight of counter weight		
Please consult with us in case higher freestanding height needed.		

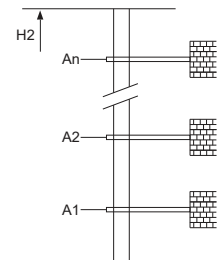
● In service
■ Out of service
F Reactions
Please refer to the user manual for reaction force

Load diagrams

R	falls	R(C _{MAX})	C _{MAX}	m	10	12	15	17	20	22	25	27	30	32	35	37	40
40m	1	4.6 ~ 19.8 [62.3]	8	t	8.0	8.0	8.0	8.0	7.9	6.8	5.5	4.8	4.0	3.5	2.8	2.5	2.0
	2	4.6 ~ 14.7 [70.3]	12	t	12.0	12.0	11.8	9.9	7.9	6.8	5.5	4.8	4.0	3.5	2.8	2.5	2.0
	3	4.6 ~ 11.7 [74.8]	16	t	16.0	15.6	11.8	9.9	7.9	6.8	5.5	4.8	4.0	3.5	2.8	2.5	2.0
35m	1	4.1 ~ 20.1 [57.2]	8	t	8.0	8.0	8.0	8.0	8.0	7.0	5.7	5.0	4.1	3.6	3.0		
	2	4.1 ~ 14.9 [66.8]	12	t	12.0	12.0	11.9	10.1	8.1	7.0	5.7	5.0	4.1	3.6	3.0		
	3	4.1 ~ 12.0 [72.0]	16	t	16.0	16.0	11.9	10.1	8.1	7.0	5.7	5.0	4.1	3.6	3.0		
30m	1	3.7 ~ 20.3 [50.2]	8	t	8.0	8.0	8.0	8.0	8.0	7.1	5.8	5.1	4.2				
	2	3.7 ~ 15.1 [62.2]	12	t	12.0	12.0	12.0	10.2	8.2	7.1	5.8	5.1	4.2				
	3	3.7 ~ 12.0 [68.6]	16	t	16.0	16.0	12.1	10.2	8.2	7.1	5.8	5.1	4.2				
25m	1	3.2 ~ 20.5 [38.5]	8	t	8.0	8.0	8.0	8.0	8.0	7.2	5.9						
	2	3.2 ~ 15.2 [55.2]	12	t	12.0	12.0	12.0	10.4	8.3	7.2	5.9						
	3	3.2 ~ 12.1 [63.7]	16	t	16.0	16.0	12.2	10.4	8.3	7.2	5.9						

Anchorage

A _n [m]	A1	A2	A3	A4	A5	A6	A7	A8	A9	A10
30.0	45.0	60.0	75.0	90.0	105.0	120.0	135.0	150.0	165.0	
H2 [m]	46.5	61.5	76.5	91.5	106.5	121.5	136.5	151.5	166.5	181.5
※ Over this height please contact us										



Mechanisms

75LVF40KL	m/min	0 ~ 41	0 ~ 82	55kW	1000m >1000m※
		8.0	4.0		
		0 ~ 27.3	0 ~ 54.6		
		12.0	6.0		
50VVF35KL	m/min	0 ~ 20.5	0 ~ 41	37kW	
		16.0	8.0		
RCV95	rpm	15~80	2min20s	2x5.5kW	
		0 ~ 0.8			
380V 50Hz(5%) 380V 60Hz(5%) 440V 60Hz(5%)	Amin	9m	125kVA	kVA	
		Pmax			
		30t			

※ Please consult us

△ Option