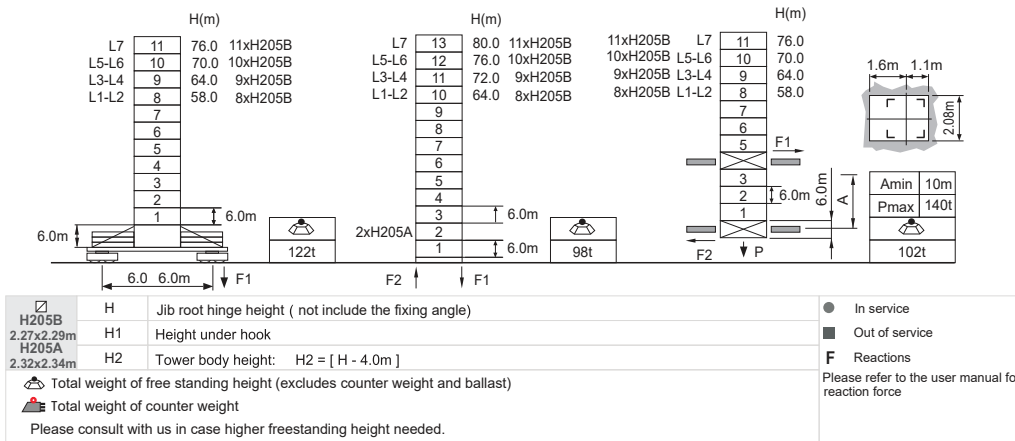


**Jib root hinge height**



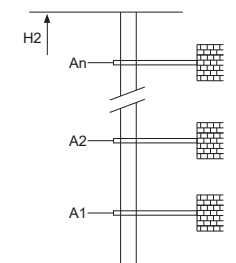
**Load diagrams**

R falls	R(C <sub>MAX</sub> )	C <sub>MAX</sub>	m	20	22	25	27	30	32	35	37	40	42	45	47	50	52	55	57	60
60m	5.4~37.7 [ 52.6 ]	12	t	12.0	12.0	12.0	12.0	12.0	12.0	12.0	12.0	10.9	10.1	8.9	8.3	7.4	6.8	6.1	5.6	5.0
55m	5.0~38.5 [ 47.4 ]	12	t	12.0	12.0	12.0	12.0	12.0	12.0	12.0	12.0	11.3	10.4	9.3	8.6	7.7	7.2	6.4		
	5.0~29.0 [ 59.3 ]	18	t	18.0	18.0	18.0	18.0	17.2	15.7	13.8	12.7	11.3	10.4	9.3	8.6	7.7	7.2	6.4		
50m	4.5~39.2 [ 40.8 ]	12	t	12.0	12.0	12.0	12.0	12.0	12.0	12.0	12.0	11.6	10.8	9.1	9.0	8.1				
	4.5~29.4 [ 55.4 ]	18	t	18.0	18.0	18.0	18.0	17.5	16.1	14.2	13.0	11.6	10.8	9.1	9.0	8.1				
	4.5~23.5 [ 63.0 ]	24	t	24.0	24.0	22.2	20.1	17.5	16.1	14.2	13.0	11.6	10.8	9.1	9.0	8.1				
45m	4.1~39.2 [ 32.6 ]	12	t	12.0	12.0	12.0	12.0	12.0	12.0	12.0	12.0	11.6	10.8	9.1						
	4.1~29.4 [ 50.8 ]	18	t	18.0	18.0	18.0	18.0	17.5	16.1	14.2	13.0	11.6	10.8	9.1						
	4.1~23.5 [ 55.4 ]	24	t	24.0	24.0	22.2	20.1	17.5	16.1	14.2	13.0	11.6	10.8	9.1						
40m	3.6~39.2 [ 18.6 ]	12	t	12.0	12.0	12.0	12.0	12.0	12.0	12.0	12.0	11.6								
	3.6~29.4 [ 44.8 ]	18	t	18.0	18.0	18.0	18.0	17.5	16.1	14.2	13.0	11.6								
	3.6~23.5 [ 55.4 ]	24	t	24.0	24.0	22.2	20.1	17.5	16.1	14.2	13.0	11.6								
35m	3.2~35.0 [ 15.0 ]	12	t	12.0	12.0	12.0	12.0	12.0	12.0	12.0										
	3.2~29.4 [ 35.8 ]	18	t	18.0	18.0	18.0	18.0	17.5	16.1	14.2										
	3.2~23.5 [ 49.5 ]	24	t	24.0	24.0	22.2	20.1	17.5	16.1	14.2										
30m	2.7~30.0 [ 15.0 ]	12	t	12.0	12.0	12.0	12.0	12.0												
	2.7~29.4 [ 18.8 ]	18	t	18.0	18.0	18.0	18.0	17.5												
	2.7~23.5 [ 40.8 ]	24	t	24.0	24.0	22.2	20.1	17.5												

**Anchorage**

An[m]	A1	A2	A3	A4	A5	A6	A7	A8	A9	A10
H2 [m]	102.0	132.0	168.0	204.0	240.0	276.0	312.0	348.0	-	-

※ Over this height please contact us



**Mechanisms**

120LVF60KW	m/min	0 ~ 36	0 ~ 72	90kW	1000m >1000m※
		t	12		
	m/min	0 ~ 24	0 ~ 48		
		t	18		
100VVF55KW	m/min	0 ~ 18	0 ~ 36	75kW	
		t	24		
RCV145	rpm	2min40s		2x7.5kW	
		0 ~ 0.6			
⚡	380V 50Hz( 5%)		220kVA		kVA
	380V 60Hz( 5%)				
	440V 60Hz( 5%)				

※ Please consult us      △ Option