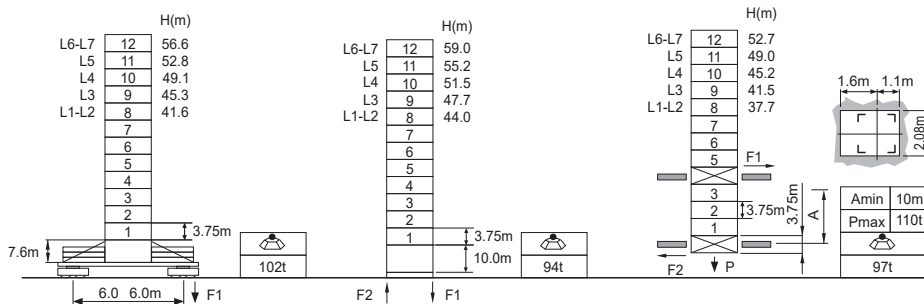


Jib root hinge height



H20	H	Jib root hinge height (not include the fixing angle)	● In service
1.95m	H1	Height under hook	■ Out of service
	H2	Tower body height: H2 = [H - 4.0m]	F Reactions

Total weight of free standing height (excludes counter weight and ballast)

Total weight of counter weight

Please consult with us in case higher freestanding height needed.

Please refer to the user manual for reaction force

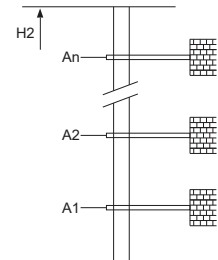
Load diagrams

R	falls	R(C _{MAX})	C _{MAX}	m	20	22	25	27	30	32	35	37	40	42	45	47	50	52	55	57	60
60m	☹	5.4~40.4 [49.4]	9	t	9.0	9.0	9.0	9.0	9.0	9.0	9.0	9.0	9.0	8.4	7.4	6.8	6.0	5.6	4.9	4.5	4.0
	☹	5.4~31.2 [59.8]	13.5	t	13.5	13.5	13.5	13.5	13.5	13.0	11.3	10.4	9.1	8.4	7.4	6.8	6.0	5.6	4.9	4.5	4.0
55m	☹	5.0~41.1 [43.8]	9	t	9.0	9.0	9.0	9.0	9.0	9.0	9.0	9.0	9.0	8.7	7.7	7.1	6.3	5.8	5.2		
	☹	5.0~31.6 [56.3]	13.5	t	13.5	13.5	13.5	13.5	13.5	13.2	11.6	10.6	9.4	8.7	7.7	7.1	6.3	5.8	5.2		
50m	☹	5.0~25.7 [63.2]	18	t	18.0	18.0	18.0	16.8	14.5	13.2	11.6	10.6	9.4	8.7	7.7	7.1	6.3	5.8	5.2		
	☹	4.5~41.6 [36.5]	9	t	9.0	9.0	9.0	9.0	9.0	9.0	9.0	9.0	9.0	8.9	7.9	7.3	6.5				
45m	☹	4.5~32.0 [51.7]	13.5	t	13.5	13.5	13.5	13.5	13.5	13.5	11.8	10.9	9.6	8.9	7.9	7.3	6.5				
	☹	4.1~32.0 [46.5]	13.5	t	13.5	13.5	13.5	13.5	13.5	13.5	11.8	10.9	9.6	8.9	7.9						
40m	☹	4.1~25.9 [56.2]	18	t	18.0	18.0	18.0	17.0	14.8	13.5	11.8	10.9	9.6	8.9	7.9						
	☹	3.6~40.0 [15.0]	9	t	9.0	9.0	9.0	9.0	9.0	9.0	9.0	9.0	9.0								
35m	☹	3.6~32.0 [39.5]	13.5	t	13.5	13.5	13.5	13.5	13.5	13.5	11.8	10.9	9.6								
	☹	3.2~35.0 [15.0]	9	t	9.0	9.0	9.0	9.0	9.0	9.0	9.0	9.0									
30m	☹	3.2~25.9 [44.3]	18	t	18.0	18.0	18.0	17.0	14.8	13.5	11.8										
	☹	2.7~30.0 [15.0]	9	t	9.0	9.0	9.0	9.0	9.0	9.0	9.0										
	☹	2.7~25.9 [33.5]	18	t	18.0	18.0	18.0	17.0	14.8												

Anchorage

An[m]	A1	A2	A3	A4	A5	A6	A7	A8	A9	A10
	38.1	60.6	83.1	105.6	128.1	150.6	173.1	195.6	218.1	-
H2 [m]	66.2	88.7	107.5	130.0	152.5	175.0	197.5	220.0	242.5	-

※ Over this height please contact us



Mechanisms

100LVF45KW-Q	m/min	0 ~ 38	0 ~ 76	75kW	700m >700m※	
		t	9			4.5
	m/min	0 ~ 25	0 ~ 50			
		t	13.5			6.75
m/min	0 ~ 19	0 ~ 38				
	t	18	9			
75VVF45KW	15~80	2min40s		55kW		
RCV145	rpm	0 ~ 0.6		2x7.5kW		
⚡	380V 50Hz(5%) 380V 60Hz(5%) 440V 60Hz(5%)		175kVA		kVA	

※ Please consult us △ Option