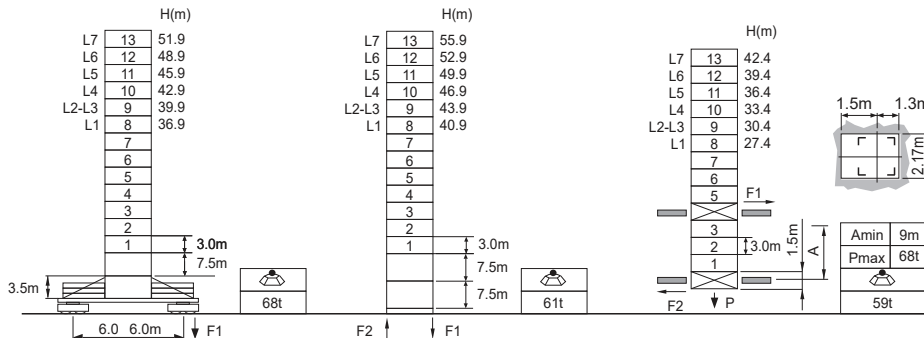


Jib root hinge height



L68B2	H	Jib root hinge height (not include the fixing angle)	● In service
□ 2.0m	H1	Height under hook	■ Out of service
	H2	Tower body height: H2 = [H - 1.93m]	F Reactions
		Total weight of free standing height (excludes counter weight and ballast)	Please refer to the user manual for reaction force
		Total weight of counter weight	
		Please consult with us in case higher freestanding height needed.	

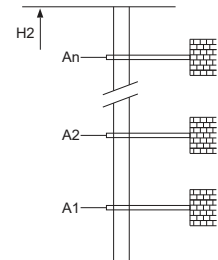
Load diagrams

R falls	R(C _{MAX})	C _{MAX}	m	20	22	25	27	30	32	35	37	40	42	45	47	50	52	55
55m	4.4~34.5 [52.4]	6	t	6.0	6.0	6.0	6.0	6.0	6.0	5.8	5.3	4.6	4.1	3.6	3.3	2.8	2.5	2.2
50m	4.1~35.5 [46.4]	6	t	6.0	6.0	6.0	6.0	6.0	6.0	6.0	5.6	4.9	4.4	3.9	3.5	3.1		
	4.1~27.2 [58.0]	9	t	9.0	9.0	9.0	9.0	7.8	7.0	6.1	5.6	4.9	4.4	3.9	3.5	3.1		
45m	3.5~36.5 [38.1]	6	t	6.0	6.0	6.0	6.0	6.0	6.0	6.0	5.8	5.1	4.7	4.2				
	3.5~27.8 [53.0]	9	t	9.0	9.0	9.0	9.0	8.1	7.3	6.4	5.8	5.1	4.7	4.2				
	3.5~22.4 [60.8]	12	t	12.0	12.0	10.4	9.3	8.1	7.3	6.4	5.8	5.1	4.7	4.2				
40m	3.1~37.3 [25.3]	6	t	6.0	6.0	6.0	6.0	6.0	6.0	6.0	6.0	6.0	5.3					
	3.1~28.3 [46.5]	9	t	9.0	9.0	9.0	9.0	8.3	7.4	6.6	6.1	5.3						
	3.1~22.7 [56.4]	12	t	12.0	12.0	10.6	9.6	8.3	7.4	6.6	6.1	5.3						
35m	2.6~35.0 [15.0]	6	t	6.0	6.0	6.0	6.0	6.0	6.0	6.0	6.0	6.0						
	2.6~28.3 [38.2]	9	t	9.0	9.0	9.0	9.0	8.3	7.4	6.6								
	2.6~22.7 [50.7]	12	t	12.0	12.0	10.6	9.6	8.3	7.4	6.6								
30m	2.2~30.0 [15.0]	6	t	6.0	6.0	6.0	6.0	6.0	6.0									
	2.2~28.3 [24.2]	9	t	9.0	9.0	9.0	9.0	9.0	9.0	8.3								
	2.2~22.7 [42.5]	12	t	12.0	12.0	10.6	9.6	8.3										
25m	1.8~25.0 [15.0]	6	t	6.0	6.0	6.0												
	1.8~22.7 [28.5]	12	t	12.0	12.0	10.6												

Anchorage

An[m]	A1	A2	A3	A4	A5	A6	A7	A8	A9	A10
	37.5	58.5	79.5	100.5	121.5	142.5	163.5	184.5	205.5	226.5
H2 [m]	63.0	84.0	102.0	123.0	144.0	165.0	186.0	207.0	228.0	249.0

※ Over this height please contact us



Mechanisms

75LVF35KW	m/min	0 ~ 38	0 ~ 76	55kW	750m >750m※	
		t	6.0			3.0
		m/min	0 ~ 25			0 ~ 50
60VVVF40KW	rpm	15~80	2min10s	45kW	2x5.5kW	
		t	9.0			4.5
RCV95	rpm	0 ~ 0.6				
⚡		380V 50Hz(5%) 380V 60Hz(5%) 440V 60Hz(5%)	135kVA		kVA	
※	Please consult us	△	Option			