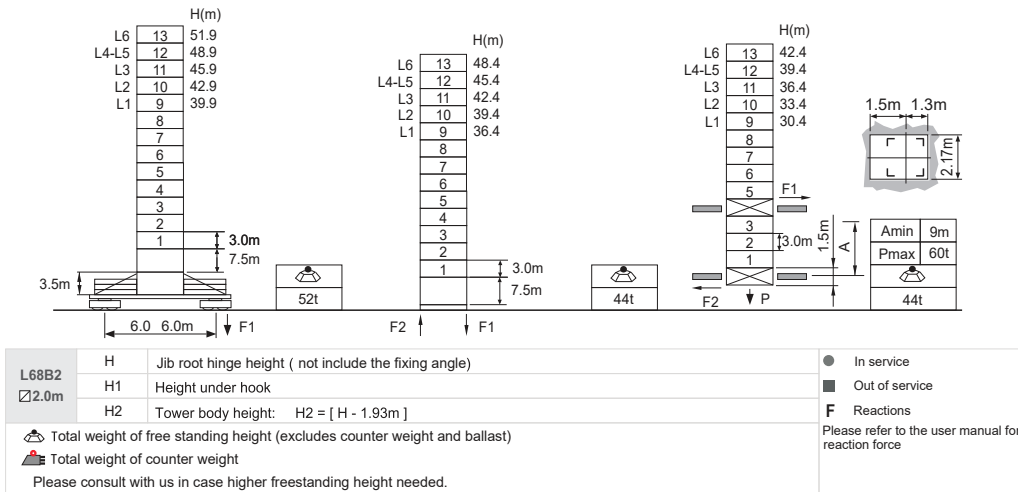



















### Jib root hinge height



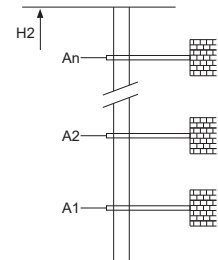
### Load diagrams

R	falls	R(C <sub>MAX</sub> )	C <sub>MAX</sub>	m	15	17	20	22	25	27	30	32	35	37	40	42	45	47	50
50m		4.1~35.7 [46.1]	5	t	5.0	5.0	5.0	5.0	5.0	5.0	5.0	5.0	5.0	4.7	4.1	3.7	3.2	2.9	2.5
		4.1~27.8 [57.2]	7.5	t	7.5	7.5	7.5	7.5	7.5	7.5	6.6	6.1	5.1	4.7	4.1	3.7	3.2	2.9	2.5
45m		3.7~36.5 [38.2]	5	t	5.0	5.0	5.0	5.0	5.0	5.0	5.0	5.0	5.0	4.9	4.3	3.9	3.4		
		3.7~28.5 [52.0]	7.5	t	7.5	7.5	7.5	7.5	7.5	7.5	6.9	6.3	5.4	4.9	4.3	3.9	3.4		
40m		3.7~23.2 [59.8]	10	t	10.0	10.0	10.0	10.0	9.2	8.3	6.9	6.3	5.4	4.9	4.3	3.9	3.4		
		3.2~37.6 [24.7]	5	t	5.0	5.0	5.0	5.0	5.0	5.0	5.0	5.0	5.0	5.0	4.5				
		3.2~29.1 [45.0]	7.5	t	7.5	7.5	7.5	7.5	7.5	7.5	7.2	6.6	5.7	5.2	4.5				
35m		3.2~23.6 [54.9]	10	t	10.0	10.0	10.0	10.0	9.2	8.3	7.2	6.6	5.7	5.2	4.5				
		2.8~35.0 [15.0]	5	t	5.0	5.0	5.0	5.0	5.0	5.0	5.0	5.0	5.0						
30m		2.8~29.1 [36.2]	7.5	t	7.5	7.5	7.5	7.5	7.5	7.5	7.2	6.6	5.7						
		2.8~23.6 [49.0]	10	t	10.0	10.0	10.0	10.0	9.2	8.3	7.2	6.6	5.7						
25m		2.3~30.0 [15.0]	5	t	5.0	5.0	5.0	5.0	5.0	5.0	5.0								
		2.3~29.1 [20.0]	7.5	t	7.5	7.5	7.5	7.5	7.5	7.5	7.2								
20m		2.3~23.6 [40.1]	10	t	10.0	10.0	10.0	10.0	9.2	8.3	7.2								
		1.9~25.0 [14.7]	5	t	5.0	5.0	5.0	5.0	5.0										
15m		1.9~25.0 [14.7]	7.5	t	7.5	7.5	7.5	7.5	7.5										
		1.9~23.6 [24.0]	10	t	10.0	10.0	10.0	10.0	9.2										

### Anchorage

An[m]	A1	A2	A3	A4	A5	A6	A7	A8	A9	A10
33.0	57.0	81.0	105.0	129.0	153.0	177.0	201.0	-	-	
H2 [m]	61.5	85.5	106.5	130.5	154.5	178.5	202.5	226.5	-	-

※ Over this height please contact us



### Mechanisms

60QP25HB-G1	m/min	0 ~ 45	0 ~ 90	45kW	560m >560m※
	t	5	2.5		
60LVF25KW	m/min	0 ~ 30	0 ~ 60	45kW	750m >750m※
	t	7.5	3.75		
40LP35H-G2	m/min	0 ~ 22.5	0 ~ 45	30kW	
	t	10	5		
RCV95	m/min	0 ~ 45	0 ~ 90	2x5.5kW	
	t	5	2.5		
	m/min	0 ~ 30	0 ~ 60		
	t	7.5	3.75		
	m/min	0 ~ 22.5	0 ~ 45		
	t	10	5		
380V 50Hz( 5%)					
380V 60Hz( 5%)					
440V 60Hz( 5%)					

※ Please consult us Option