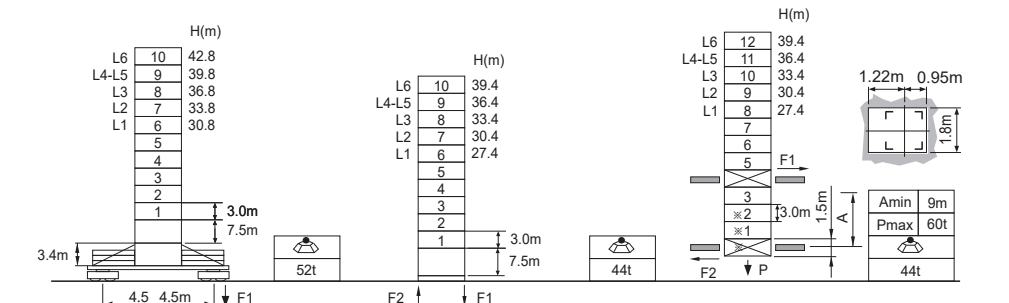


**Jib root hinge height**



L46A1	H	Jib root hinge height ( not include the fixing angle )	● In service
	H1	Height under hook	■ Out of service
	H2	Tower body height: H2 = [ H - 1.93m ]	F Reactions
Total weight of free standing height (excludes counter weight and ballast) Total weight of counter weight Please consult with us in case higher freestanding height needed.			Please refer to the user manual for reaction force

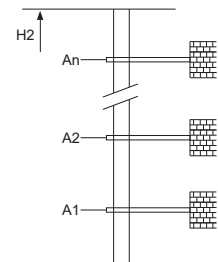
**Load diagrams**

R	falls	R(C <sub>MAX</sub> )	C <sub>MAX</sub>	m	15	17	20	22	25	27	30	32	35	37	40	42	45	47	50
50m	☺	4.1~35.7 [ 46.1 ]	5	t	5.0	5.0	5.0	5.0	5.0	5.0	5.0	5.0	5.0	4.7	4.1	3.7	3.2	2.9	2.5
	☹	4.1~27.8 [ 57.2 ]	7.5	t	7.5	7.5	7.5	7.5	7.5	7.5	6.6	6.1	5.1	4.7	4.1	3.7	3.2	2.9	2.5
45m	☺	3.7~36.5 [ 38.2 ]	5	t	5.0	5.0	5.0	5.0	5.0	5.0	5.0	5.0	5.0	4.9	4.3	3.9	3.4		
	☹	3.7~28.5 [ 52.0 ]	7.5	t	7.5	7.5	7.5	7.5	7.5	7.5	6.9	6.3	5.4	4.9	4.3	3.9	3.4		
40m	☺	3.2~37.6 [ 24.7 ]	5	t	5.0	5.0	5.0	5.0	5.0	5.0	5.0	5.0	5.0	5.0	4.5				
	☹	3.2~23.2 [ 59.8 ]	10	t	10.0	10.0	10.0	10.0	9.2	8.3	6.9	6.3	5.4	4.9	4.3	3.9	3.4		
35m	☺	2.8~35.0 [ 15.0 ]	5	t	5.0	5.0	5.0	5.0	5.0	5.0	5.0	5.0	5.0	5.0	5.0				
	☹	2.8~29.1 [ 36.2 ]	7.5	t	7.5	7.5	7.5	7.5	7.5	7.5	7.2	6.6	5.7	5.2	4.5				
30m	☺	2.3~30.0 [ 15.0 ]	5	t	5.0	5.0	5.0	5.0	5.0	5.0	5.0	5.0	5.0						
	☹	2.3~29.1 [ 20.0 ]	7.5	t	7.5	7.5	7.5	7.5	7.5	7.5	7.2								
25m	☺	1.9~25.0 [ 14.7 ]	5	t	5.0	5.0	5.0	5.0	5.0										
	☹	1.9~25.0 [ 14.7 ]	7.5	t	7.5	7.5	7.5	7.5	7.5										
		1.9~23.6 [ 24.0 ]	10	t	10.0	10.0	10.0	10.0	9.2										

**Anchorage**

An[m]	A1	A2	A3	A4	A5	A6	A7	A8	A9	A10
H2 [m]	24.0	39.0	54.0	69.0	84.0	99.0	114.0	129.0	160.0	175.0
H2 [m]	43.5	58.5	73.5	88.5	100.5	115.5	130.5	145.5	144.5	159.5

※ Over this height please contact us



**Mechanisms**

60QP25HB-G1	m/min	0 ~ 45	0 ~ 90	45kW	560m >560m※
	t	5	2.5		
60LVF25KW	m/min	0 ~ 30	0 ~ 60	45kW	750m >750m※
	t	7.5	3.75		
40LP35H-G2	m/min	0 ~ 22.5	0 ~ 45	30kW	
	t	10	5		
RCV95	m/min	0 ~ 45	0 ~ 90	2x5.5kW	
	t	5	2.5		
440V 60Hz	m/min	0 ~ 30	0 ~ 60	105kVA	kVA
	t	7.5	3.75		
440V 50Hz	m/min	0 ~ 22.5	0 ~ 45	105kVA	
	t	10	5		

※ Please consult us      △ Option