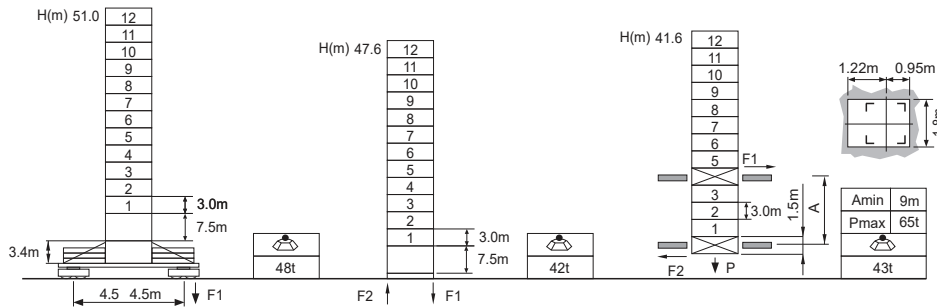


Jib root hinge height



L46A1	H	Jib root hinge height (not include the fixing angle)
⊠1.6m	H1	Height under hook: $H1 = [H - 3.1m]$
	H2	Tower body height: $H2 = [H - 4.1m]$

⚖️ Total weight of free standing jib (excludes counter weight and ballast)
⚖️ Total weight of counter weight
Please consult with us in case higher freestanding height needed.

F Reactions
Please refer to the user manual for reaction force

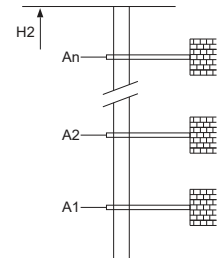
Load diagrams

R	falls	R(C _{MAX})	C _{MAX}	m	15	17	20	22	25	27	30	32	35	37	40	42	45	47	50	52	55	57	60
60m	⚖️	3.0-31.3	5	t	5.0	5.0	5.0	5.0	5.0	5.0	5.0	4.89	4.43	4.17	3.82	3.62	3.35	3.19	2.97	2.84	2.66	2.55	2.40
	⚖️	3.0-15.8	10	t	10.0	9.27	7.77	6.99	6.06	5.55	4.92	4.58	4.11	3.84	3.50	3.29	3.02	2.86	2.64	2.51	2.33	2.22	2.07
55m	⚖️	3.0-32.3	5	t	5.0	5.0	5.0	5.0	5.0	5.0	5.0	5.0	4.45	4.3	4.09	3.87	3.58	3.41	3.18	3.04	2.85		
	⚖️	3.0-16.8	10	t	10.0	9.89	8.29	7.47	6.48	5.94	5.27	4.89	4.41	4.13	3.76	3.54	3.25	3.08	2.85	2.71	2.52		
50m	⚖️	3.0-35.1	5	t	5.0	5.0	5.0	5.0	5.0	5.0	5.0	5.0	5.0	4.72	4.33	4.10	3.80	3.62	3.37				
	⚖️	3.0-17.7	10	t	10.0	10.0	8.78	7.91	6.87	6.30	5.59	5.19	4.68	4.39	4.00	3.77	3.47	3.29	3.05				
45m	⚖️	3.0-32.3	5	t	5.0	5.0	5.0	5.0	5.0	5.0	5.0	5.0	5.0	5.0	5.0	4.99	4.58	4.34	4.02				
	⚖️	3.0-18.6	10	t	10.0	10.0	9.28	8.36	7.27	6.67	5.93	5.51	4.97	4.66	4.25	4.01	3.69						
40m	⚖️	3.0-37.6	5	t	5.0	5.0	5.0	5.0	5.0	5.0	5.0	5.0	5.0	5.0	5.0	4.68							
	⚖️	3.0-19.0	10	t	10.0	10.0	9.48	8.54	7.43	6.82	6.06	5.63	5.08	4.77	4.35								
35m	⚖️	3.0-35.0	5	t	5.0	5.0	5.0	5.0	5.0	5.0	5.0	5.0	5.0										
	⚖️	3.0-19.0	10	t	10.0	10.0	9.48	8.54	7.43	6.82	6.06	5.63	5.08										
30m	⚖️	3.0-30.0	5	t	5.0	5.0	5.0	5.0	5.0	5.0	5.0												
	⚖️	3.0-19.0	10	t	10.0	10.0	9.48	8.54	7.43	6.82	6.06												

Anchorage

An [m]	A1	A2	A3	A4	A5	A6	A7	A8	A9	A10
An [m]	33.0	54.0	75.0	96.0	117.0	138.0	-	-	-	-
H2 [m]	67.5	88.5	106.5	127.5	148.5	169.5	※	-	-	-

※ Over this height please contact us



Mechanisms

⬆️	60QP25HB-G1	⚙️	m/min	0 ~ 45	0 ~ 90	45kW	⚙️
			t	5	2.5		
⬆️	60LVF25KL	⚙️	m/min	0 ~ 22.5	0 ~ 45	45kW	⚙️
			t	10	5		
⬆️	DVF	⚙️	m/min	0 ~ 42	0 ~ 84	45kW	⚙️
			t	5	2.5		
⬆️	RCV95	⚙️	m/min	0 ~ 21	0 ~ 42	45kW	⚙️
			t	10	5		
⚡			m/min	0 ~ 60		5.5kW	
			rpm	0 ~ 0.7			
⚡			380V 50Hz(5%)		75kVA	kVA	
			380V 60Hz(5%)				
			440V 60Hz(5%)				

※ Please consult us

⬆️ Option