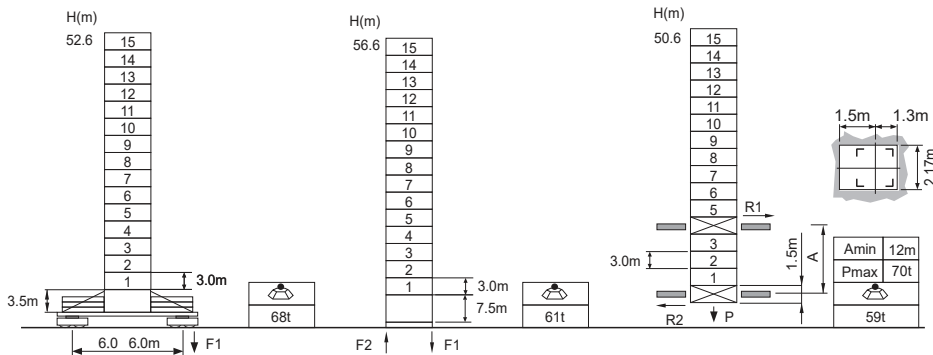


Jib root hinge height



L68B2 2.0m	H	Jib root hinge height (not include the fixing angle)	F Reactions Please refer to the user manual for reaction force
	H1	Height under hook: $H1 = [H - 3.1m]$	
	H2	Tower body height: $H2 = [H - 4.1m]$	

Total weight of free standing height (excludes counter weight and ballast)
 Total weight of counter weight
 Please consult with us in case higher freestanding height needed.

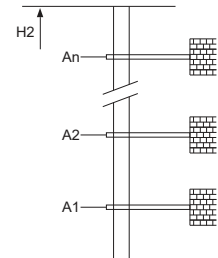
Load diagrams

R	falls	R(C _{MAX})	C _{MAX}	m	15	17	20	22	25	27	30	32	35	37	40	42	45	47	50	52	55	57	60	62	65
65m		2.4 - 25.3	5	t	5.0	5.0	5.0	5.0	5.0	4.64	4.1	3.80	3.41	3.19	2.90	2.72	2.49	2.36	2.17	2.06	1.91	1.81	1.69	1.61	1.50
		2.4 - 13.5	10	t	8.84	7.70	6.42	5.76	4.97	4.54	4.0	3.70	3.31	3.09	2.80	2.62	2.39	2.26	2.07	1.96	1.81	1.71	1.59	1.51	1.40
60m		2.4 - 15.2	10	t	10.0	8.81	7.36	6.62	5.72	5.24	4.63	4.29	3.85	3.60	3.27	3.07	2.81	2.66	2.45	2.32	2.15	2.04	1.90		
		2.4 - 31.0	5	t	5.0	5.0	5.0	5.0	5.0	5.0	5.0	4.82	4.35	4.07	3.71	3.50	3.22	3.05	2.82	2.69	2.50				
55m		2.4 - 16.5	10	t	10.0	9.62	8.06	7.25	6.28	5.75	5.09	4.72	4.25	3.97	3.61	3.40	3.12	2.95	2.72	2.59	2.40				
		2.4 - 32.5	5	t	5.0	5.0	5.0	5.0	5.0	5.0	5.0	5.0	4.60	4.31	3.93	3.71	3.41	3.24	3.00						
50m		2.4 - 17.3	10	t	10.0	10.0	8.50	7.65	6.63	6.08	5.39	5.00	4.50	4.21	3.83	3.61	3.31	3.14	2.90						
		2.4 - 33.2	5	t	5.0	5.0	5.0	5.0	5.0	5.0	5.0	5.0	4.71	4.42	4.03	3.80	3.50								
45m		2.4 - 17.7	10	t	10.0	10.0	8.69	7.82	6.79	6.22	5.52	5.12	4.61	4.32	3.93	3.70	3.40								
		2.4 - 33.6	5	t	5.0	5.0	5.0	5.0	5.0	5.0	5.0	5.0	4.68	4.38	4.00										
40m		2.4 - 17.9	10	t	10.0	10.0	8.82	7.77	6.74	6.18	5.48	5.08	4.58	4.28	3.90										
		2.4 - 33.6	5	t	5.0	5.0	5.0	5.0	5.0	5.0	5.0	5.0	4.68												
35m		2.4 - 17.9	10	t	10.0	10.0	8.82	7.77	6.74	6.18	5.48	5.08	4.58												
		2.4 - 30.0	5	t	5.0	5.0	5.0	5.0	5.0	5.0	5.0	5.0	4.68												
30m		2.4 - 17.9	10	t	10.0	10.0	8.82	7.77	6.74	6.18	5.48	5.08	4.58												

Anchorage

An[m]	A1	A2	A3	A4	A5	A6	A7	A8	A9	A10
H2 [m]	42.0	69.0	96.0	123.0	150.0	177.0	204.0	231.0	-	-

H2 [m] 82.5 106.5 133.5 160.5 187.5 214.5 241.5 268.5*
 * Over this height please contact us



Mechanisms

	60QP25HB-G1		m/min	0 ~ 45	0 ~ 90	45kW	
			t	5	2.5		
	60LVF25KL		m/min	0 ~ 22.5	0 ~ 45	45kW	
			t	10	5		
	DVF		m/min		0 ~ 60	5.5kW	
			t				
	JH13F		rpm		0 ~ 0.7	2 x 5.5kW	
			t				
	380V 50Hz(5%) 380V 60Hz(5%) 440V 60Hz(5%)				75kVA	kVA	

* Please consult us △ Option