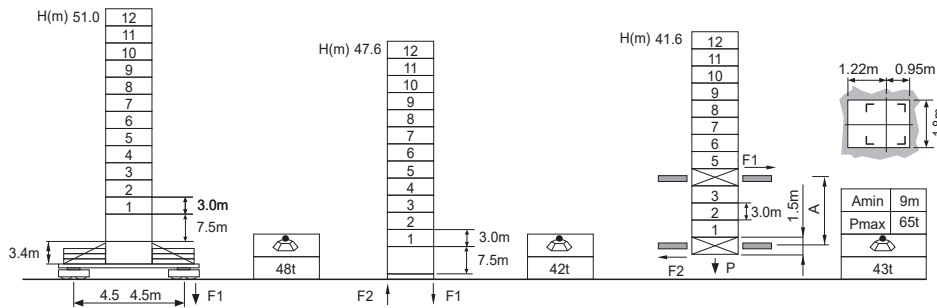


Jib root hinge height



L46A1 1.6m	H	Jib root hinge height (not include the fixing angle)	F Reactions Please refer to the user manual for reaction force
	H1	Height under hook: H1 = [H - 3.1m]	
	H2	Tower body height: H2 = [H - 4.1m]	
 Please consult with us in case higher freestanding height needed.			

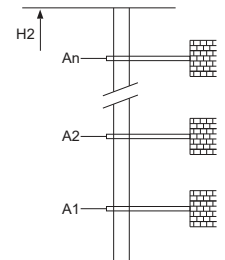
Load diagrams

R	falls	R(C _{MAX})	C _{MAX}	m	15	17	20	22	25	27	30	32	35	37	40	42	45	47	50	52	55	57	60	62	65
65m		2.4 - 30.6	4	t	4.0	4.0	4.0	4.0	4.0	4.0	4.0	3.80	3.41	3.19	2.90	2.72	2.49	2.36	2.17	2.06	1.91	1.81	1.69	1.61	1.50
		2.4 - 16.6	8	t	8.0	7.70	6.42	5.76	4.97	4.54	4.0	3.70	3.31	3.09	2.80	2.62	2.39	2.26	2.07	1.96	1.81	1.71	1.59	1.51	1.40
60m		2.4 - 34.6	4	t	4.0	4.0	4.0	4.0	4.0	4.0	4.0	4.0	3.95	3.70	3.37	3.17	2.91	2.76	2.55	2.42	2.25	2.14	2.00		
		2.4 - 18.7	8	t	8.0	8.0	7.36	6.62	5.72	5.24	4.63	4.29	3.85	3.60	3.27	3.07	2.81	2.66	2.45	2.32	2.15	2.04	1.90		
55m		2.4 - 37.5	4	t	4.0	4.0	4.0	4.0	4.0	4.0	4.0	4.0	4.0	4.0	4.0	4.0	3.71	3.50	3.22	3.05	2.82	2.69	2.50		
		2.4 - 20.3	8	t	8.0	8.0	8.0	7.25	6.28	5.75	5.09	4.72	4.25	3.97	3.61	3.40	3.12	2.95	2.72	2.59	2.40				
50m		2.4 - 39.4	4	t	4.0	4.0	4.0	4.0	4.0	4.0	4.0	4.0	4.0	4.0	4.0	4.0	3.93	3.71	3.41	3.24	3.00				
		2.4 - 21.3	8	t	8.0	8.0	8.0	7.65	6.63	6.08	5.39	5.00	4.50	4.21	3.83	3.61	3.31	3.14	2.90						
45m		2.4 - 40.2	4	t	4.0	4.0	4.0	4.0	4.0	4.0	4.0	4.0	4.0	4.0	4.0	4.0	3.80	3.50							
		2.4 - 21.8	8	t	8.0	8.0	8.0	7.82	6.79	6.22	5.52	5.12	4.61	4.32	3.93	3.70	3.40								
40m		2.4 - 40.0	4	t	4.0	4.0	4.0	4.0	4.0	4.0	4.0	4.0	4.0	4.0	4.0	4.0	4.0	4.0							
		2.4 - 21.9	8	t	8.0	8.0	8.0	7.94	6.74	6.18	5.48	5.08	4.58	4.28	3.90										
35m		2.4 - 35.0	4	t	4.0	4.0	4.0	4.0	4.0	4.0	4.0	4.0	4.0	4.0											
		2.4 - 21.9	8	t	8.0	8.0	8.0	7.94	6.74	6.18	5.48	5.08	4.58												
30m		2.4 - 30.0	4	t	4.0	4.0	4.0	4.0	4.0	4.0	4.0	4.0	4.0												
		2.4 - 21.9	8	t	8.0	8.0	8.0	7.94	6.74	6.18	5.48														

Anchorage

An[m]	A1	A2	A3	A4	A5	A6	A7	A8	A9	A10
	33.0	54.0	75.0	96.0	117.0	138.0	-	-	-	-
H2 [m]	67.5	88.5	106.5	127.5	148.5	169.5	*	-	-	-

* Over this height please contact us



Mechanisms

	50QP20HS-CG5		m/min	40	80	37kW		500m >500m*
		t	4	2				
	50LVF20KL-C		m/min	20	40	37kW		710m >710m*
		t	8	4				
	DVF		m/min	0 ~ 42	0 ~ 84	37kW		710m >710m*
		t	4	2				
	JH13F		m/min	0 ~ 21	0 ~ 42	37kW		710m >710m*
		t	8	4				
			m/min	0 ~ 60				5.5kW
			rpm	0 ~ 0.7				2x5.5kW
			380V 50Hz(5%) 380V 60Hz(5%) 440V 60Hz(5%)	65kVA				kVA

* Please consult us △ Option