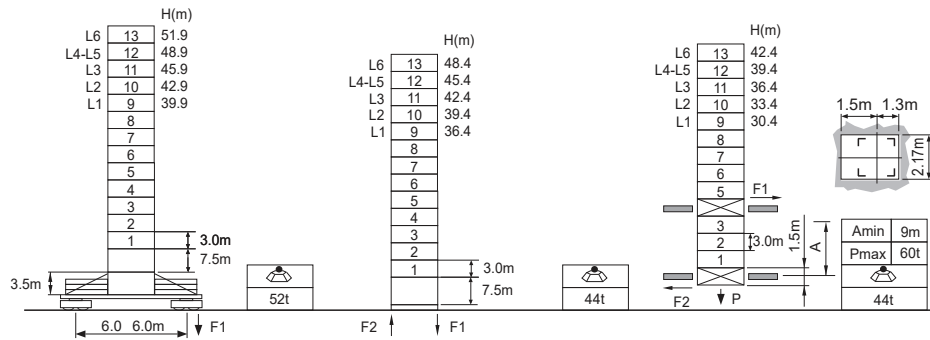


L(m)	Counter weight	H1[m]		
		● 15	● 85	■ 45
L1 50	1+2+3+4+5+6+7+8	H+10.7	H+49.5	H+34.3
L2 45	1+2+3+4+5+7+8	H+9.4	H+44.3	H+30.6
L3 40	1+2+3+5+7+8	H+8.0	H+39.2	H+27.0
L4 35	1+2+3+5+8	H+6.7	H+34.0	H+23.3
L5 30	1+2+3+8	H+5.4	H+28.9	H+19.7
L6 25	1+2+8	H+4.1	H+23.7	H+16.1

**Jib root hinge height**



L68B2	H	Jib root hinge height ( not include the fixing angle)
□ 2.0m	H1	Height under hook
	H2	Tower body height: H2 = [ H - 1.93m ]

Total weight of free standing height (excludes counter weight and ballast)  
 Total weight of counter weight  
 Please consult with us in case higher freestanding height needed.

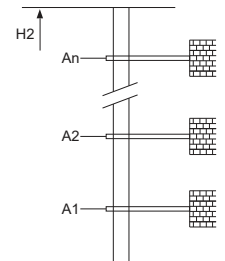
**Load diagrams**

R	falls	R(C <sub>MAX</sub> )	C <sub>MAX</sub>	m	15	17	20	22	25	27	30	32	35	37	40	42	45	47	50
50m		4.1~40.3 [ 38.6 ]	4	t	4.0	4.0	4.0	4.0	4.0	4.0	4.0	4.0	4.0	4.0	4.0	3.7	3.2	2.9	2.5
		4.1~32.1 [ 51.3 ]	6	t	6.0	6.0	6.0	6.0	6.0	6.0	6.0	6.0	6.0	6.0	6.0	4.7	4.1	3.7	3.2
45m		4.1~26.6 [ 58.7 ]	8	t	8.0	8.0	8.0	8.0	8.0	7.8	6.6	6.1	5.1	4.7	4.1	3.7	3.2	2.9	2.5
		3.7~41.9 [ 25.8 ]	4	t	4.0	4.0	4.0	4.0	4.0	4.0	4.0	4.0	4.0	4.0	4.0	3.9	3.4		
40m		3.7~33.0 [ 44.6 ]	6	t	6.0	6.0	6.0	6.0	6.0	6.0	6.0	6.0	6.0	6.0	6.0	4.3	3.9	3.4	
		3.7~27.3 [ 53.8 ]	8	t	8.0	8.0	8.0	8.0	8.0	8.0	6.9	6.3	5.4	4.9	4.3	3.9	3.4		
35m		3.2~40.0 [ 15.0 ]	4	t	4.0	4.0	4.0	4.0	4.0	4.0	4.0	4.0	4.0	4.0	4.0	4.0	4.0	4.0	
		3.2~33.9 [ 34.9 ]	6	t	6.0	6.0	6.0	6.0	6.0	6.0	6.0	6.0	6.0	6.0	6.0	5.7	5.2	4.5	
30m		3.2~27.8 [ 47.5 ]	8	t	8.0	8.0	8.0	8.0	8.0	8.0	7.2	6.6	5.7	5.2	4.5				
		2.8~35.0 [ 15.0 ]	4	t	4.0	4.0	4.0	4.0	4.0	4.0	4.0	4.0	4.0	4.0	4.0	4.0	4.0	4.0	
25m		2.8~27.8 [ 39.5 ]	8	t	8.0	8.0	8.0	8.0	8.0	8.0	7.2	6.6	5.7	5.2	4.5				
		2.3~30.0 [ 15.0 ]	4	t	4.0	4.0	4.0	4.0	4.0	4.0	4.0	4.0	4.0	4.0	4.0	4.0	4.0	4.0	
20m		2.3~27.8 [ 26.0 ]	8	t	8.0	8.0	8.0	8.0	8.0	8.0	8.0	7.2							
		1.9~25.0 [ 14.7 ]	4	t	4.0	4.0	4.0	4.0	4.0	4.0									
15m		1.9~25.0 [ 14.7 ]	6	t	6.0	6.0	6.0	6.0	6.0										
		1.9~25.0 [ 14.7 ]	8	t	8.0	8.0	8.0	8.0	8.0										

**Anchorage**

An[m]	A1	A2	A3	A4	A5	A6	A7	A8	A9	A10
33.0	57.0	81.0	105.0	129.0	153.0	177.0	201.0	-	-	
H2 [m]	61.5	85.5	106.5	130.5	154.5	178.5	202.5	226.5	-	-

※ Over this height please contact us



**Mechanisms**

	50QP20HS-CG5		m/min	0 ~ 40	0 ~ 80	37kW	
		t	4	2			
	50LVF20K-LC		m/min	0 ~ 26	0 ~ 52	37kW	
		t	6	3			
	40LP35H-G2		m/min	0 ~ 20	0 ~ 40	30kW	
		t	8	4			
	RCV95		m/min	0 ~ 42	0 ~ 84	2x5.5kW	
		t	4	2			
			m/min	0 ~ 28	0 ~ 56	95kVA	
		t	6	3			
			m/min	0 ~ 21	0 ~ 42	95kVA	
		t	8	4			

※ Please consult us △ Option