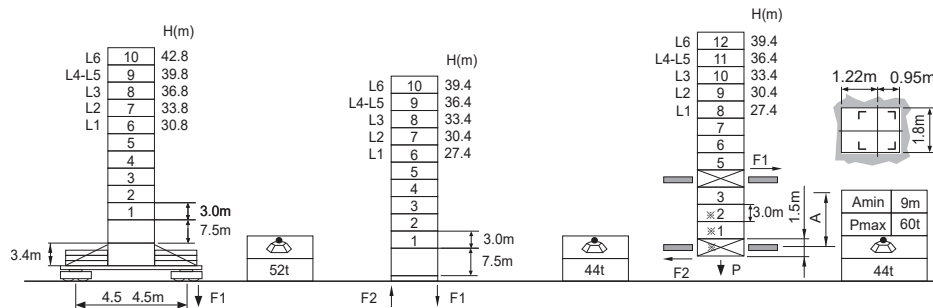


Jib root hinge height



L46A1	H	Jib root hinge height (not include the fixing angle)	● In service
	H1	Height under hook	■ Out of service
	H2	Tower body height: H2 = [H - 1.93m]	F Reactions
Total weight of free standing height (excludes counter weight and ballast) Total weight of counter weight Please consult with us in case higher freestanding height needed.			Please refer to the user manual for reaction force

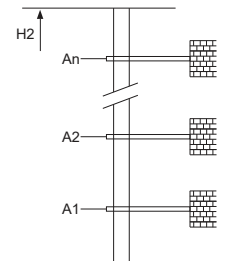
Load diagrams

R	falls	R(C _{MAX})	C _{MAX}	m	15	17	20	22	25	27	30	32	35	37	40	42	45	47	50	
50m	☺	4.1~40.3 [38.6]	4	t	4.0	4.0	4.0	4.0	4.0	4.0	4.0	4.0	4.0	4.0	4.0	3.7	3.2	2.9	2.5	
	☹	4.1~32.1 [51.3]	6	t	6.0	6.0	6.0	6.0	6.0	6.0	6.0	6.0	5.1	4.7	4.1	3.7	3.2	2.9	2.5	
45m	☺	3.7~41.9 [25.8]	4	t	4.0	4.0	4.0	4.0	4.0	4.0	4.0	4.0	4.0	4.0	4.0	3.9	3.4			
	☹	3.7~33.0 [44.6]	6	t	6.0	6.0	6.0	6.0	6.0	6.0	6.0	6.0	5.4	4.9	4.3	3.9	3.4			
40m	☺	3.2~40.0 [15.0]	4	t	4.0	4.0	4.0	4.0	4.0	4.0	4.0	4.0	4.0	4.0	4.0	4.0	4.0	4.0		
	☹	3.2~33.9 [34.9]	6	t	6.0	6.0	6.0	6.0	6.0	6.0	6.0	6.0	5.7	5.2	4.5					
35m	☺	2.8~35.0 [15.0]	4	t	4.0	4.0	4.0	4.0	4.0	4.0	4.0	4.0	4.0	4.0	4.0	4.0	4.0	4.0		
	☹	2.8~27.8 [39.5]	8	t	8.0	8.0	8.0	8.0	8.0	8.0	8.0	7.2	6.6	5.7	5.2	4.5				
30m	☺	2.3~30.0 [15.0]	4	t	4.0	4.0	4.0	4.0	4.0	4.0	4.0	4.0	4.0	4.0	4.0	4.0	4.0	4.0		
	☹	2.3~27.8 [26.0]	8	t	8.0	8.0	8.0	8.0	8.0	8.0	8.0	7.2	6.6	5.7	5.2	4.5				
25m	☺	1.9~25.0 [14.7]	4	t	4.0	4.0	4.0	4.0	4.0	4.0	4.0	4.0	4.0	4.0	4.0	4.0	4.0	4.0		
	☹	1.9~25.0 [14.7]	8	t	8.0	8.0	8.0	8.0	8.0	8.0	8.0	7.2	6.6	5.7	5.2	4.5				

Anchorage

An[m]	A1	A2	A3	A4	A5	A6	A7	A8	A9	A10
H2 [m]	43.5	58.5	73.5	88.5	100.5	115.5	130.5	145.5	144.5	159.5

※ Over this height please contact us



Mechanisms

50QP20HS-CG5	m/min	0 ~ 40	0 ~ 80	37kW	500m >500m※
	t	4	2		
50LVF20KL-C	m/min	0 ~ 26	0 ~ 52	37kW	710m >710m※
	t	6	3		
40LP35H-G2	m/min	0 ~ 20	0 ~ 40	30kW	
	t	8	4		
RCV95	m/min	0 ~ 42	0 ~ 84	2x5.5kW	
	t	4	2		
⚡	m/min	0 ~ 28	0 ~ 56	95kVA	kVA
	t	6	3		
⚡	m/min	0 ~ 21	0 ~ 42	95kVA	kVA
	t	8	4		

※ Please consult us △ Option