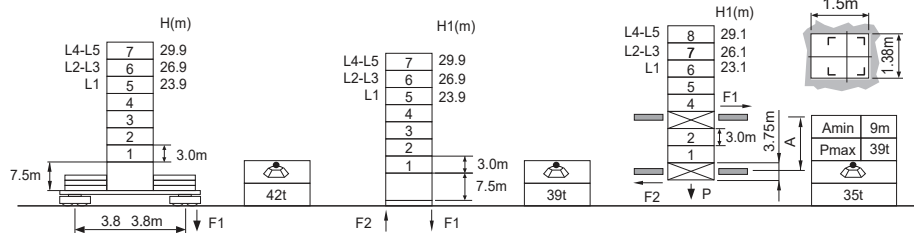


**Jib root hinge height**



S24A1	H	Jib root hinge height ( not include the fixing angle )	● In service
1.2m	H1	Height under hook	■ Out of service
	H2	Tower body height: H2 = [ H - 1.43m ]	F Reactions
		Total weight of free standing height (excludes counter weight and ballast)	Please refer to the user manual for reaction force
		Total weight of counter weight	
		Please consult with us in case higher freestanding height needed.	

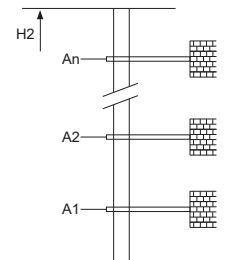
**Load diagrams**

R	falls	R(C <sub>MAX</sub> )	C <sub>MAX</sub>	m	10	12	15	17	20	22	25	27	30	32	35	37	40
40m	1	3.1~28.9 [ 45.4 ]	3.0	t	3.0	3.0	3.0	3.0	3.0	3.0	3.0	3.0	2.8	2.4	2.0	1.8	1.5
	2	3.1~22.6 [ 56.5 ]	4.5	t	4.5	4.5	4.5	4.5	4.5	4.5	3.8	3.3	2.8	2.4	2.0	1.8	1.5
	3	3.1~18.5 [ 63.0 ]	6.0	t	6.0	6.0	6.0	6.0	5.3	4.6	3.8	3.3	2.8	2.4	2.0	1.8	1.5
35m	1	2.7~30.0 [ 35.0 ]	3.0	t	3.0	3.0	3.0	3.0	3.0	3.0	3.0	3.0	3.0	2.6	2.2		
	2	2.7~23.1 [ 50.2 ]	4.5	t	4.5	4.5	4.5	4.5	4.5	4.5	3.9	3.4	3.0	2.6	2.2		
	3	2.7~18.8 [ 58.4 ]	6.0	t	6.0	6.0	6.0	6.0	5.5	4.6	3.9	3.4	3.0	2.6	2.2		
30m	1	2.2~30.0 [ 15.0 ]	3.0	t	3.0	3.0	3.0	3.0	3.0	3.0	3.0	3.0	3.0	3.0			
	2	2.2~23.6 [ 41.0 ]	4.5	t	4.5	4.5	4.5	4.5	4.5	4.5	3.9	3.4	3.0				
	3	2.2~19.2 [ 51.8 ]	6.0	t	6.0	6.0	6.0	6.0	5.5	4.6	3.9	3.4	3.0				
25m	1	1.8~25.0 [ 18.0 ]	3.0	t	3.0	3.0	3.0	3.0	3.0	3.0	3.0	3.0					
	2	1.8~23.6 [ 26.5 ]	4.5	t	4.5	4.5	4.5	4.5	4.5	4.5	3.9						
	3	1.8~19.2 [ 43.0 ]	6.0	t	6.0	6.0	6.0	6.0	5.5	4.6	3.9						
20m	1	1.4~20.0 [ 20.0 ]	3.0	t	3.0	3.0	3.0	3.0	3.0								
	2	1.4~20.0 [ 20.0 ]	4.5	t	4.5	4.5	4.5	4.5	4.5								
	3	1.4~19.2 [ 26.0 ]	6.0	t	6.0	6.0	6.0	6.0	5.5								

**Anchorage**

An [m]	A1	A2	A3	A4	A5	A6	A7	A8	A9	A10
H2 [m]	37.5	49.5	61.5	73.5	85.5	97.5	106.5	*	*	*

\* Over this height please contact us



**Mechanisms**

30LVF15KL	m/min	0 ~ 35	0 ~ 70	22kW	350m >350m*
		t	3.0		
50LVF20KL-B	m/min	0 ~ 23	0 ~ 46	37kW	600m >600m*
		t	4.5		
30VV20KW	rpm	0 ~ 17.5	0 ~ 35	22kW	kVA
		t	6.0		
RVC95	rpm	0 ~ 42	0 ~ 84	5.5kW	kVA
		t	3.0		
30VV20KW	rpm	0 ~ 28	0 ~ 56	22kW	kVA
		t	4.5		
30VV20KW	rpm	0 ~ 21	0 ~ 41	22kW	kVA
		t	6.0		
30VV20KW	rpm	15~80	2min	22kW	kVA
		t	6.0		
30VV20KW	rpm	0 ~ 0.8		5.5kW	kVA
		t	0 ~ 0.8		
30VV20KW	rpm	380V 50Hz( 5%)	30LVF15KL 65kVA	22kW	kVA
		380V 60Hz( 5%)	50LVF20KL-B 85kVA		
30VV20KW	rpm	440V 60Hz( 5%)		22kW	kVA
		t			

\* Please consult us      △ Option