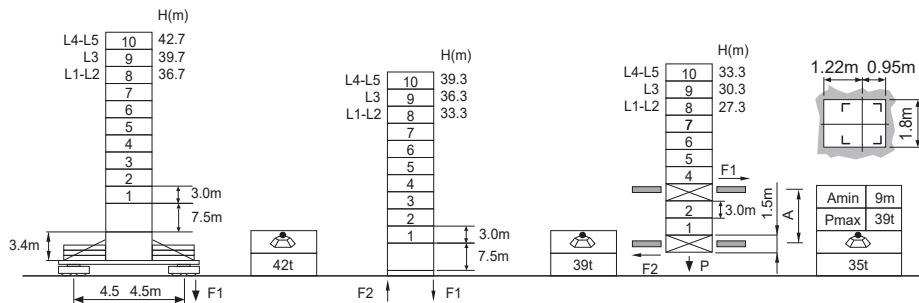


L [m]	Counter weight	H1 [m]			Counter weight		
		● 15°	● 85°	■ 45°	A	B	▲ [kg]
L1 40	1+2+3+4+5	H+7.9	H+38.9	H+26.7	2	-	8520
L2 35	1+2+3+5	H+6.6	H+33.9	H+23.2	2	-	8520
L3 30	1+2+4+5	H+5.3	H+28.9	H+19.7	2	-	8520
L4 25	1+2+5	H+4.0	H+23.9	H+16.1	2	-	8520
L5 20	1+4+5	H+2.7	H+18.9	H+12.6	2	-	8520

① 10.0	② 10.0	③ 10.0	④ 5.0	⑤ 7.12	⑥	
⑦	⑧	⑨	⑩	⑪	⑫	

A=4260kg
B= - kg

Jib root hinge height



L46A1	H	Jib root hinge height (not include the fixing angle)	● In service
□ 1.6m	H1	Height under hook	■ Out of service
	H2	Tower body height: H2 = [H - 1.78m]	F Reactions
▲	Total weight of free standing height (excludes counter weight and ballast)		Please refer to the user manual for reaction force
▲	Total weight of counter weight		
Please consult with us in case higher freestanding height needed.			

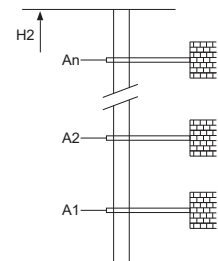
Load diagrams

R	falls	R(C _{MAX})	C _{MAX}	m	10	12	15	17	20	22	25	27	30	32	35	37	40
40m	☹	3.1~28.9 [45.4]	3.0	t	3.0	3.0	3.0	3.0	3.0	3.0	3.0	3.0	2.8	2.4	2.0	1.8	1.5
	☹	3.1~22.6 [56.5]	4.5	t	4.5	4.5	4.5	4.5	4.5	4.5	3.8	3.3	2.8	2.4	2.0	1.8	1.5
	☹	3.1~18.5 [63.0]	6.0	t	6.0	6.0	6.0	6.0	5.3	4.6	3.8	3.3	2.8	2.4	2.0	1.8	1.5
35m	☹	2.7~30.0 [35.0]	3.0	t	3.0	3.0	3.0	3.0	3.0	3.0	3.0	3.0	3.0	3.0	2.6	2.2	
	☹	2.7~23.1 [50.2]	4.5	t	4.5	4.5	4.5	4.5	4.5	4.5	3.9	3.4	3.0	2.6	2.2		
	☹	2.7~18.8 [58.4]	6.0	t	6.0	6.0	6.0	6.0	5.5	4.6	3.9	3.4	3.0	2.6	2.2		
30m	☹	2.2~30.0 [15.0]	3.0	t	3.0	3.0	3.0	3.0	3.0	3.0	3.0	3.0	3.0	3.0			
	☹	2.2~23.6 [41.0]	4.5	t	4.5	4.5	4.5	4.5	4.5	4.5	3.9	3.4	3.0				
	☹	2.2~19.2 [51.8]	6.0	t	6.0	6.0	6.0	6.0	5.5	4.6	3.9	3.4	3.0				
25m	☹	1.8~25.0 [18.0]	3.0	t	3.0	3.0	3.0	3.0	3.0	3.0	3.0						
	☹	1.8~23.6 [26.5]	4.5	t	4.5	4.5	4.5	4.5	4.5	4.5	3.9						
	☹	1.8~19.2 [43.0]	6.0	t	6.0	6.0	6.0	6.0	5.5	4.6	3.9						
20m	☹	1.4~20.0 [20.0]	3.0	t	3.0	3.0	3.0	3.0	3.0								
	☹	1.4~20.0 [20.0]	4.5	t	4.5	4.5	4.5	4.5	4.5								
	☹	1.4~19.2 [26.0]	6.0	t	6.0	6.0	6.0	6.0	5.5								

Anchorage

An [m]	A1	A2	A3	A4	A5	A6	A7	A8	A9	A10
H2 [m]	30.1	51.1	72.1	93.1	114.1	135.1	156.1	177.1	-	-

※ Over this height please contact us



Mechanisms

Symbol	Model	Speed	Power	Capacity	
☹	30LVF15KL	m/min	0 ~ 35	0 ~ 70	
		t	3.0	1.5	
		m/min	0 ~ 23	0 ~ 46	
		t	4.5	2.25	
		m/min	0 ~ 17.5	0 ~ 35	
		t	6.0	3.0	
☹	50LVF20KL-B	m/min	0 ~ 42	0 ~ 84	
		t	3.0	1.5	
		m/min	0 ~ 28	0 ~ 56	
		t	4.5	2.25	
		m/min	0 ~ 21	0 ~ 41	
		t	6.0	3.0	
☹	30VVF20KW	15~80	2min	22kW	
☹	RCV95	rpm	0 ~ 0.8	5.5kW	
⚡		380V 50Hz(5%) 380V 60Hz(5%) 440V 60Hz(5%)		30LVF15KL 60kVA 50LVF20KL-B 80kVA	kVA
※ Please consult us		△ Option			