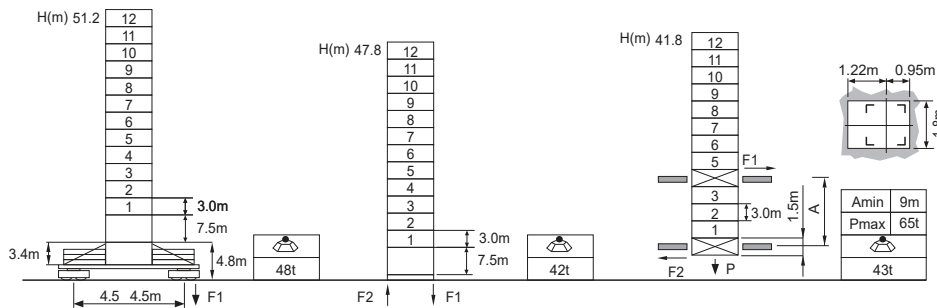


**Jib root hinge height**



L46A1	H	Jib root hinge height ( not include the fixing angle)	
□1.6m	H1	Height under hook: H1 = [ H - 3.0m ]	
	H2	Tower body height: H2 = [ H - 4.3m ]	
		Total weight of free standing height (excludes counter weight and ballast)	
		Total weight of counter weight	
		Please consult with us in case higher freestanding height needed.	
		<b>F</b> Reactions	
		Please refer to the user manual for reaction force	

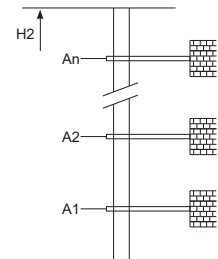
**Load diagrams**

R	falls	R(C <sub>MAX</sub> )	C <sub>MAX</sub>	m	15	17	20	22	25	27	30	32	35	37	40	42	45	47	50	52	55	57	60	62	65
65m	☺	3.0-25.0	5	t	5.0	5.0	5.0	5.0	5.0	4.64	4.10	3.80	3.41	3.19	2.90	2.72	2.49	2.36	2.17	2.06	1.90	1.81	1.69	1.61	1.50
	☹	3.0-13.3	10	t	8.84	7.70	6.42	5.76	4.97	4.54	4.00	3.70	3.31	3.09	2.80	2.62	2.39	2.26	2.07	1.96	1.80	1.71	1.59	1.51	1.40
60m	☺	3.0-15.2	10	t	10.0	8.95	7.48	6.72	5.82	5.33	4.71	4.36	3.92	3.66	3.33	3.13	2.86	2.71	2.49	2.37	2.19	2.09	1.90		
	☹	3.0-32.4	5	t	5.0	5.0	5.0	5.0	5.0	5.0	5.0	5.0	4.65	4.36	3.95	3.75	3.45	3.27	3.03	2.89	2.69				
55m	☺	3.0-17.2	10	t	10.0	10.0	8.48	7.72	6.70	6.14	5.44	5.05	4.55	4.26	3.85	3.65	3.35	3.17	2.93	2.79	2.59				
	☹	3.0-32.4	5	t	5.0	5.0	5.0	5.0	5.0	5.0	5.0	5.0	4.65	4.36	3.95	3.75	3.45	3.27	3.03						
50m	☺	3.0-17.2	10	t	10.0	10.0	8.48	7.72	6.70	6.14	5.44	5.05	4.55	4.26	3.85	3.65	3.35	3.17	2.93						
	☹	3.0-32.4	5	t	5.0	5.0	5.0	5.0	5.0	5.0	5.0	5.0	4.65	4.36	3.95	3.75	3.45	3.27	3.03						
45m	☺	3.0-17.2	10	t	10.0	10.0	8.48	7.72	6.70	6.14	5.44	5.05	4.55	4.26	3.85	3.65	3.35								
	☹	3.0-32.4	5	t	5.0	5.0	5.0	5.0	5.0	5.0	5.0	5.0	4.65	4.36	3.95	3.75	3.45								
40m	☺	3.0-17.2	10	t	10.0	10.0	8.48	7.72	6.70	6.14	5.44	5.05	4.55	4.26	3.85										
	☹	3.0-32.4	5	t	5.0	5.0	5.0	5.0	5.0	5.0	5.0	5.0	4.65	4.36	3.95										
35m	☺	3.0-17.2	10	t	10.0	10.0	8.48	7.72	6.70	6.14	5.44	5.05	4.55	4.26	3.85										
	☹	3.0-30.0	5	t	5.0	5.0	5.0	5.0	5.0	5.0	5.0	5.0	4.65												
30m	☺	3.0-17.2	10	t	10.0	10.0	8.48	7.72	6.70	6.14	5.44	5.05	4.55												
	☹	3.0-17.2	10	t	10.0	10.0	8.48	7.72	6.70	6.14	5.44	5.05	4.55												

**Anchorage**

An[m]	A1	A2	A3	A4	A5	A6	A7	A8	A9	A10
	33.0	54.0	75.0	96.0	117.0	138.0	-	-	-	-
H2 [m]	67.5	88.5	106.5	127.5	148.5	169.5	-	-	-	-

※ Over this height please contact us



**Mechanisms**

☺	60QP25HB-G1	☺	m/min	0 ~ 45	0 ~ 90	45kW	560m >560m※
		t	5	2.5			
☹	60LVF25KL △	☺	m/min	0 ~ 22.5	0 ~ 45	45kW	710m >710m※
		t	10	5			
☺	DVF	☺	m/min	0 ~ 42	0 ~ 84	45kW	710m >710m※
		t	5	2.5			
☹	JH13F	☺	m/min	0 ~ 21	0 ~ 42	45kW	710m >710m※
		t	10	5			
⚡				380V 50Hz( 5% ) 380V 60Hz( 5% ) 440V 60Hz( 5% )	75kVA		kVA

※ Please consult us      △ Option