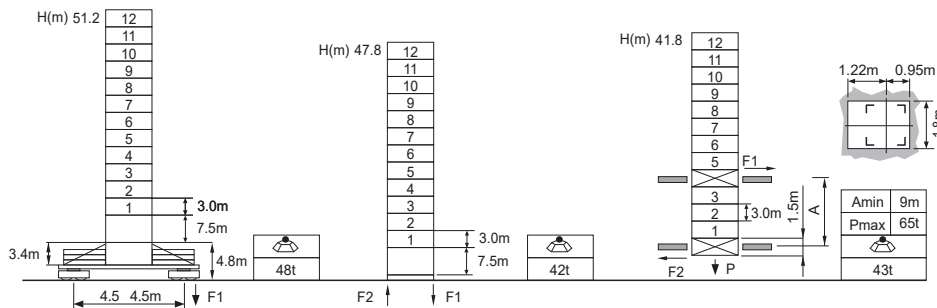


**Jib root hinge height**



L46A1	H	Jib root hinge height ( not include the fixing angle)	
□1.6m	H1	Height under hook: H1 = [ H - 3.0m ]	
	H2	Tower body height: H2 = [ H - 4.3m ]	

Total weight of free standing height (excludes counter weight and ballast)  
 Total weight of counter weight  
 Please consult with us in case higher freestanding height needed.

**F Reactions**  
Please refer to the user manual for reaction force

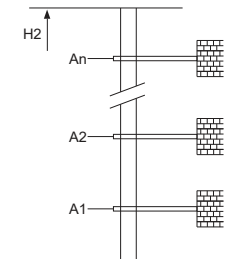
**Load diagrams**

R	falls	R(C <sub>MAX</sub> )	C <sub>MAX</sub>	m	15	17	20	22	25	27	30	32	35	37	40	42	45	47	50	52	55	57	60	62	65
65m		3.0~30.2	4	t	4.0	4.0	4.0	4.0	4.0	4.0	4.0	3.80	3.41	3.19	2.90	2.72	2.49	2.36	2.17	2.06	1.90	1.81	1.69	1.61	1.50
		3.0~16.3	8	t	8.0	7.70	6.42	5.76	4.97	4.54	4.00	3.70	3.31	3.09	2.80	2.62	2.39	2.26	2.07	1.96	1.80	1.71	1.59	1.51	1.40
60m		3.0~34.6	4	t	4.0	4.0	4.0	4.0	4.0	4.0	4.0	4.0	4.0	3.76	3.43	3.23	2.96	2.81	2.59	2.47	2.29	2.19	2.04		
		3.0~18.6	8	t	8.0	8.0	7.48	6.72	5.82	5.33	4.71	4.36	3.92	3.66	3.33	3.13	2.86	2.71	2.49	2.37	2.19	2.09	1.94		
55m		3.0~39.2	4	t	4.0	4.0	4.0	4.0	4.0	4.0	4.0	4.0	4.0	4.0	3.95	3.75	3.45	3.27	3.03	2.89	2.69				
		3.0~21.1	8	t	8.0	8.0	8.0	7.72	6.70	6.14	5.44	5.05	4.55	4.26	3.85	3.65	3.35	3.17	2.93	2.79	2.59				
50m		3.0~39.2	4	t	4.0	4.0	4.0	4.0	4.0	4.0	4.0	4.0	4.0	4.0	4.0	3.95	3.75	3.45	3.27	3.03					
		3.0~21.1	8	t	8.0	8.0	8.0	7.72	6.70	6.14	5.44	5.05	4.55	4.26	3.85	3.65	3.35	3.17	2.93						
45m		3.0~39.2	4	t	4.0	4.0	4.0	4.0	4.0	4.0	4.0	4.0	4.0	4.0	4.0	3.95	3.75	3.45							
		3.0~21.1	8	t	8.0	8.0	8.0	7.72	6.70	6.14	5.44	5.05	4.55	4.26	3.85	3.65	3.35								
40m		3.0~39.2	4	t	4.0	4.0	4.0	4.0	4.0	4.0	4.0	4.0	4.0	4.0	4.0	3.95									
		3.0~21.1	8	t	8.0	8.0	8.0	7.72	6.70	6.14	5.44	5.05	4.55	4.26	3.85										
35m		3.0~35.0	4	t	4.0	4.0	4.0	4.0	4.0	4.0	4.0	4.0	4.0	4.0	4.0										
		3.0~21.1	8	t	8.0	8.0	8.0	7.72	6.70	6.14	5.44	5.05	4.55												
30m		3.0~30.0	4	t	4.0	4.0	4.0	4.0	4.0	4.0	4.0	4.0	4.0	4.0	4.0										
		3.0~21.1	8	t	8.0	8.0	8.0	7.72	6.70	6.14	5.44	5.05													

**Anchorage**

An[m]	A1	A2	A3	A4	A5	A6	A7	A8	A9	A10
	33.0	54.0	75.0	96.0	117.0	138.0	-	-	-	-
H2 [m]	67.5	88.5	106.5	127.5	148.5	169.5	※	-	-	-

※ Over this height please contact us



**Mechanisms**

	50QP20HS-CG5		m/min	40	80	37KW	
		t	4	2			
	50LVF20K-LC		m/min	20	40	37kW	
		t	8	4			
	△		m/min	0 ~ 42	0 ~ 84	37kW	
		t	4	2			
	△		m/min	0 ~ 21	0 ~ 42	37kW	
		t	8	4			
	DVF	m/min	0 ~ 60		5.5kW		
	JH13F	rpm	0 ~ 0.7		2×5.5kW		
			380V 50Hz( 5%) 380V 60Hz( 5%) 440V 60Hz( 5%)		65kVA		<b>kVA</b>

※ Please consult us      △ Option