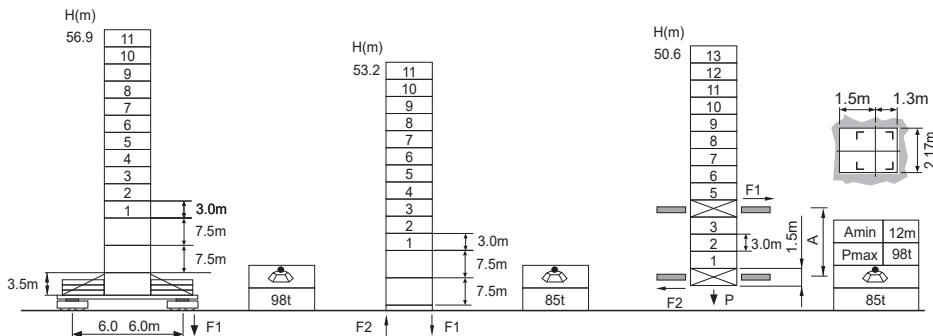


Jib root hinge height



L68B2	H	Jib root hinge height (not include the fixing angle)
□2.0m	H1	Height under hook: $H1 = [H - 3.2m]$
	H2	Tower body height: $H2 = [H - 5.28m]$

⚖ Total weight of free standing height (excludes counter weight and ballast)
 ⚖ Total weight of counter weight
 Please consult with us in case higher freestanding height needed.

F Reactions
 Please refer to the user manual for reaction force

Load diagrams

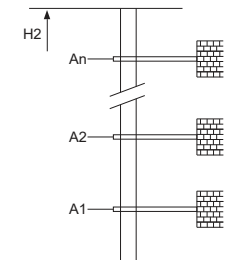
R	falls	R(C _{MAX})	C _{MAX}	m	15	17	20	22	25	27	30	32	35	37	40	42	45	47	50	52	55	57	60	65	67	70	72	75
75m	☹	3.3~29.5	8	t	8.0	8.0	8.0	8.0	8.0	7.87	7.33	6.64	6.24	5.71	5.41	5.00	4.75	4.42	4.22	3.95	3.76	3.56	3.42	3.23	3.11	2.94	2.84	2.70
70m	☹	3.3~14.8	16	t	15.85	13.83	11.55	10.37	8.96	8.19	7.24	6.70	6.01	5.61	5.08	4.77	4.36	4.12	3.79	3.59	3.32	3.16	2.93	2.79	2.60	2.48	2.31	2.07
70m	☹	3.3~34.0	8	t	8.0	8.0	8.0	8.0	8.0	8.0	8.0	7.75	7.29	6.69	6.33	5.86	5.58	5.20	4.97	4.66	4.47	4.21	4.05	3.83	3.69	3.50		
70m	☹	3.3~17.1	16	t	16.0	16.0	13.48	12.14	10.52	9.63	8.53	7.91	7.12	6.66	6.06	5.70	5.23	4.95	4.57	4.34	4.03	3.84	3.58	3.42	3.20	3.06	2.87	
65m	☹	3.3~35.4	8	t	8.0	8.0	8.0	8.0	8.0	8.0	8.0	8.0	7.63	7.00	6.63	6.14	5.85	5.45	5.21	4.89	4.69	4.42	4.25	4.02				
65m	☹	3.3~17.8	16	t	16.0	16.0	14.12	12.71	11.02	10.10	8.95	8.31	7.48	7.00	6.37	6.00	5.51	5.22	4.82	4.58	4.26	4.06	3.79	3.62	3.39			
60m	☹	3.3~36.5	8	t	8.0	8.0	8.0	8.0	8.0	8.0	8.0	8.0	8.0	7.90	7.25	6.87	6.36	6.06	5.65	5.41	5.07	4.87	4.59					
60m	☹	3.3~18.4	16	t	16	16	14.62	13.17	11.42	10.47	9.29	8.62	7.76	7.27	6.62	6.24	5.73	5.43	5.02	4.77	4.44	4.23	3.95					
60m	☹	3.3~37.7	8	t	8.0	8.0	8.0	8.0	8.0	8.0	8.0	8.0	8.0	8.0	7.50	7.11	6.59	6.27	5.85	5.60	5.25							
60m	☹	3.3~18.9	16	t	16.0	16.0	15.12	13.62	11.82	10.84	9.62	8.93	8.05	7.54	6.87	6.48	5.95	5.64	5.22	4.97	4.62							
60m	☹	3.3~38.8	8	t	8.0	8.0	8.0	8.0	8.0	8.0	8.0	8.0	8.0	8.0	7.75	7.35	6.81	6.49	6.05									
60m	☹	3.3~19.5	16	t	16.0	16.0	15.62	14.07	12.23	11.21	9.95	9.25	8.33	7.81	7.12	6.72	6.18	5.85	5.42									
60m	☹	3.3~40.0	8	t	8.0	8.0	8.0	8.0	8.0	8.0	8.0	8.0	8.0	8.0	8.0	7.59	7.03											
60m	☹	3.3~20.1	16	t	16.0	16.0	16.0	14.53	12.62	11.58	10.29	9.56	8.62	8.08	7.37	6.95	6.40											
45m	☹	3.3~40.0	8	t	8.0	8.0	8.0	8.0	8.0	8.0	8.0	8.0	8.0	8.0	8.0	8.0	8.0											
40m	☹	3.3~20.1	16	t	16.0	16.0	16.0	15.21	13.22	12.14	10.79	10.03	9.05	8.48	7.75													

Anchorage

An[m]	A1	A2	A3	A4	A5	A6	A7	A8	A9	A10
	37.5	64.5	91.5	118.5	145.5	172.5	199.5	226.5	253.5	-

H2 [m]	75.0	102.0	129.0	156.0	183.0	210.0	237.0	224.0	291.0	-
									※	

※ Over this height please contact us



Mechanisms

⬆	75JLF40	m/min	50	74	75KW	790m >790m※
		t	8	4		
⬆		m/min	25	37		
		t	16	8		
⬆	DVF	m/min	0~65		7.5kW	
⬆	RCV145	rpm	0~0.8		2x7.5kW	
⚡	380V 50Hz(5%) 380V 60Hz(5%) 440V 60Hz(5%)		115kVA		kVA	

※ Please consult us △ Option