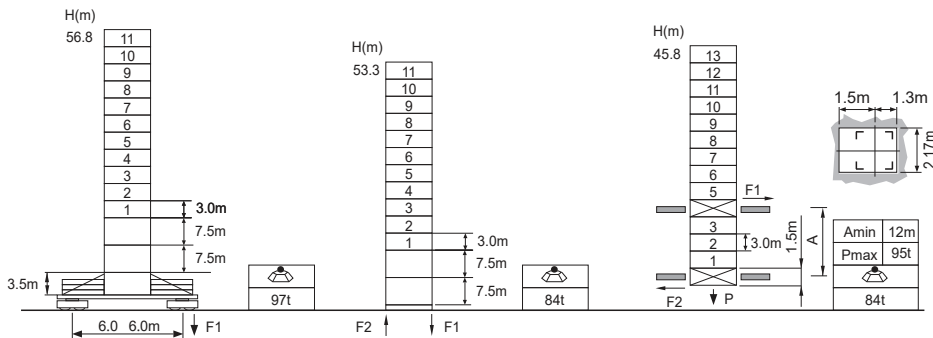


Jib root hinge height



L68B2 2.0m	H	Jib root hinge height (not include the fixing angle)	
	H1	Height under hook: $H1 = [H - 3.2m]$	
	H2	Tower body height: $H2 = [H - 5.28m]$	

Total weight of free standing height (excludes counter weight and ballast)
 Total weight of counter weight
 Please consult with us in case higher freestanding height needed.

F Reactions
Please refer to the user manual for reaction force

Load diagrams

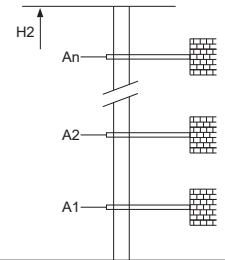
R	falls	R(C _{MAX})	C _{MAX}	m	15	17	20	22	25	27	30	32	35	37	40	42	45	47	50	52	55	57	60	62	65	67	70
70m		3.3-44.1	6	t	6.0	6.0	6.0	6.0	6.0	6.0	6.0	6.0	6.0	6.0	6.0	6.0	5.86	5.58	5.20	4.97	4.66	4.47	4.21	4.05	3.83	3.69	3.50
		3.3-22.8	12	t	12.0	12.0	12.0	12.0	10.52	9.63	8.53	7.91	7.12	6.66	6.06	5.70	5.23	4.95	4.57	4.34	4.03	3.84	3.58	3.42	3.20	3.06	2.87
65m		3.3-46.5	6	t	6.0	6.0	6.0	6.0	6.0	6.0	6.0	6.0	6.0	6.0	6.0	6.0	5.85	5.45	5.21	4.89	4.69	4.42	4.25	4.02			
		3.3-23.7	12	t	12.0	12.0	12.0	12.0	11.02	10.10	8.95	8.31	7.48	7.00	6.37	6.00	5.51	5.22	4.82	4.58	4.26	4.06	3.79	3.62	3.39		
60m		3.3-48.6	6	t	6.0	6.0	6.0	6.0	6.0	6.0	6.0	6.0	6.0	6.0	6.0	6.0	5.65	5.41	5.07	4.87	4.59						
		3.3-24.5	12	t	12.0	12.0	12.0	12.0	11.42	10.47	9.29	8.62	7.76	7.27	6.62	6.24	5.73	5.43	5.02	4.77	4.44	4.23	3.95				
55m		3.3-49.1	6	t	6.0	6.0	6.0	6.0	6.0	6.0	6.0	6.0	6.0	6.0	6.0	6.0	6.0	6.0	6.0	6.0	6.0	6.0	6.0	6.0	6.0	6.0	6.0
		3.3-24.7	12	t	12.0	12.0	12.0	12.0	11.82	10.84	9.62	8.93	8.05	7.54	6.87	6.48	5.95	5.64	5.22	4.97	4.62						
50m		3.3-50.0	6	t	6.0	6.0	6.0	6.0	6.0	6.0	6.0	6.0	6.0	6.0	6.0	6.0	6.0	6.0	6.0	6.0	6.0	6.0	6.0	6.0	6.0	6.0	6.0
		3.3-26.0	12	t	12.0	12.0	12.0	12.0	12.0	11.21	9.95	9.25	8.33	7.81	7.12	6.72	6.18	5.85	5.42								
45m		3.3-45.0	6	t	6.0	6.0	6.0	6.0	6.0	6.0	6.0	6.0	6.0	6.0	6.0	6.0	6.0	6.0	6.0	6.0	6.0	6.0	6.0	6.0	6.0	6.0	6.0
		3.3-26.8	12	t	12.0	12.0	12.0	12.0	12.0	11.58	10.29	9.56	8.62	8.08	7.37	6.95	6.40										
40m		3.3-40.0	6	t	6.0	6.0	6.0	6.0	6.0	6.0	6.0	6.0	6.0	6.0	6.0	6.0	6.0	6.0	6.0	6.0	6.0	6.0	6.0	6.0	6.0	6.0	6.0
		3.3-27.2	12	t	12.0	12.0	12.0	12.0	12.0	10.79	10.03	9.05	8.48	7.75													

Anchorage

An[m]	A1	A2	A3	A4	A5	A6	A7	A8	A9	A10
	37.5	64.5	91.5	118.5	145.5	172.5	199.5	226.5	253.5	-

H2 [m]	75.0	102.0	129.0	156.0	183.0	210.0	237.0	224.0	291.0	-
									*	

* Over this height please contact us



Mechanisms

	75QFK30		m/min	45	90	55KW	
		t	6	3			
	DVF		m/min	22.5	40	2x7.5KW	730m >730m*
		t	12	6			
	RCV145		rpm	0 ~ 65	0 ~ 0.8	kVA	
			380V 50Hz(5%)	90kVA			
			380V 60Hz(5%)				
			440V 60Hz(5%)				

* Please consult us △ Option