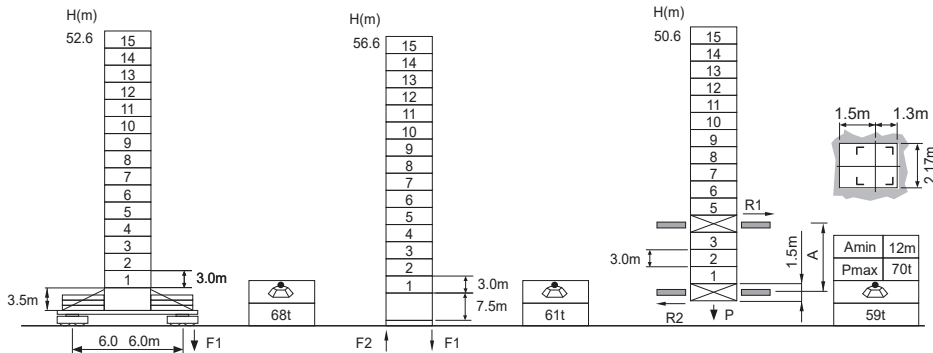


Jib root hinge height



L68B2 2.0m	H	Jib root hinge height (not include the fixing angle)	F Reactions Please refer to the user manual for reaction force
	H1	Height under hook: $H1 = [H - 3.1m]$	
	H2	Tower body height: $H2 = [H - 4.16m]$	

Total weight of free standing jib (excludes counter weight and ballast)
 Total weight of counter weight
 Please consult with us in case higher freestanding height needed.

Load diagrams

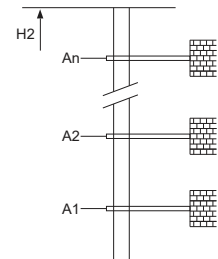
R	falls	R(C _{MAX})	C _{MAX}	m	15	17	20	22	25	27	30	32	35	37	40	42	45	47	50	52	55	57	60	62	65	67	70
70m		3.0 - 33.9	5	t	5.0	5.0	5.0	5.0	5.0	5.0	5.0	5.0	4.83	4.52	4.12	3.89	3.57	3.38	3.13	2.98	2.77	2.64	2.47	2.36	2.22	2.13	2.00
		3.0 - 18.2	10	t	10.0	10.0	8.97	8.07	6.99	6.40	5.67	5.26	4.73	4.42	4.02	3.79	3.47	3.28	3.03	2.88	2.67	2.54	2.37	2.26	2.12	2.03	1.90
65m		3.0 - 34.9	5	t	5.0	5.0	5.0	5.0	5.0	5.0	5.0	5.0	4.99	4.67	4.26	4.02	3.69	3.50	3.24	3.08	2.87	2.74	2.56	2.45	2.30		
		3.0 - 18.8	10	t	10.0	10.0	9.25	8.32	7.21	6.61	5.85	5.43	4.89	4.57	4.16	3.92	3.59	3.40	3.14	2.98	2.77	2.64	2.46	2.35	2.20		
60m		3.0 - 37.4	5	t	5.0	5.0	5.0	5.0	5.0	5.0	5.0	5.0	5.0	5.0	4.62	4.36	4.02	3.81	3.53	3.36	3.13	3.00	2.80				
		3.0 - 19.9	10	t	10.0	10.0	9.97	8.98	7.79	7.15	6.34	5.88	5.30	4.96	4.52	4.26	3.92	3.71	3.43	3.26	3.03	2.90	2.70				
55m		3.0 - 39.9	5	t	5.0	5.0	5.0	5.0	5.0	5.0	5.0	5.0	5.0	5.0	4.98	4.71	4.34	4.12	3.82	3.64	3.40						
		3.0 - 21.4	10	t	10.0	10.0	10.0	9.64	8.37	7.68	6.82	6.34	5.71	5.35	4.88	4.61	4.24	4.02	3.72	3.54	3.30						
50m		3.0 - 41.4	5	t	5.0	5.0	5.0	5.0	5.0	5.0	5.0	5.0	5.0	5.0	5.0	5.0	5.0	5.0	5.0	5.0	5.0	5.0	5.0	5.0	5.0	5.0	5.0
		3.0 - 22.3	10	t	10.0	10.0	10.0	10.0	8.73	8.02	7.12	6.62	5.97	5.60	5.11	4.82	4.44	4.21	3.90								
45m		3.0 - 43.5	5	t	5.0	5.0	5.0	5.0	5.0	5.0	5.0	5.0	5.0	5.0	5.0	5.0	5.0	5.0	5.0	5.0	5.0	5.0	5.0	5.0	5.0	5.0	5.0
		3.0 - 23.4	10	t	10.0	10.0	9.48	10.0	9.21	8.46	7.52	6.99	6.31	5.92	5.41	5.11	4.70										
40m		3.0 - 40.0	5	t	5.0	5.0	5.0	5.0	5.0	5.0	5.0	5.0	5.0	5.0	5.0	5.0	5.0	5.0	5.0	5.0	5.0	5.0	5.0	5.0	5.0	5.0	5.0
		3.0 - 24.1	10	t	10.0	10.0	10.0	10.0	9.51	8.74	7.77	7.23	6.53	6.13	5.60												
35m		3.0 - 35.0	5	t	5.0	5.0	5.0	5.0	5.0	5.0	5.0	5.0	5.0	5.0	5.0	5.0	5.0	5.0	5.0	5.0	5.0	5.0	5.0	5.0	5.0	5.0	5.0
		3.0 - 24.1	10	t	10.0	10.0	10.0	10.0	9.51	8.74	7.77	7.23	6.53														
30m		3.0 - 30.0	5	t	5.0	5.0	5.0	5.0	5.0	5.0	5.0	5.0	5.0	5.0	5.0	5.0	5.0	5.0	5.0	5.0	5.0	5.0	5.0	5.0	5.0	5.0	5.0
		3.0 - 24.1	10	t	10.0	10.0	10.0	10.0	9.51	8.74	7.77																

Anchorage

An[m]	A1	A2	A3	A4	A5	A6	A7	A8	A9	A10
	42.0	69.0	96.0	123.0	150.0	177.0	204.0	231.0	-	-

H2 [m]	82.5	106.5	133.5	160.5	187.5	214.5	241.5	268.5	-	-
								※		

※ Over this height please contact us



Mechanisms

	60QP25HB-G1		m/min	0 ~ 45	0 ~ 90	45kW	
			t	5	2.5		
	60LVF25KL		m/min	0 ~ 22.5	0 ~ 45	45kW	
			t	10	5		
	DVF		m/min	0 ~ 60		5.5kW	
	JH13F		rpm	0 ~ 0.7		2x5.5kW	
			380V 50Hz(5%)			75kVA	kVA
			380V 60Hz(5%)				
			440V 60Hz(5%)				

※ Please consult us

△ Option