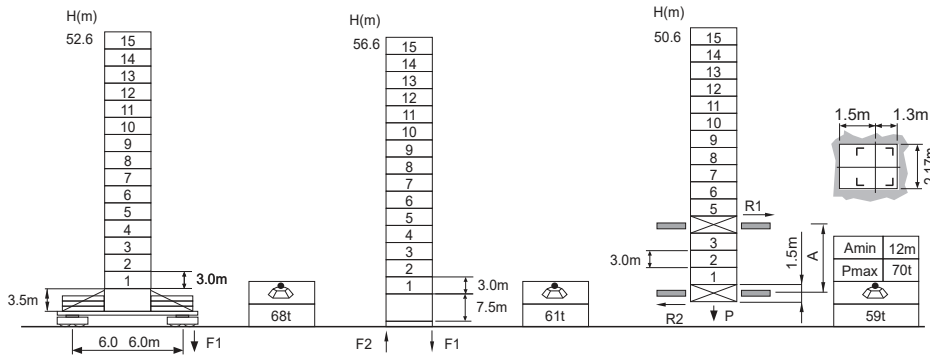


### Jib root hinge height



L68B2 2.0m	H	Jib root hinge height ( not include the fixing angle)
	H1	Height under hook: $H1 = [ H - 3.1m ]$
	H2	Tower body height: $H2 = [ H - 4.1m ]$

Total weight of free standing height (excludes counter weight and ballast)  
 Total weight of counter weight  
 Please consult with us in case higher freestanding height needed.

**F** Reactions  
Please refer to the user manual for reaction force

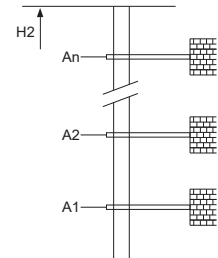
### Load diagrams

R	falls	R(C <sub>MAX</sub> )	C <sub>MAX</sub>	m	15	17	20	22	25	27	30	32	35	37	40	42	45	47	50	52	55	57	60
60m		3.0-31.3	5	t	5.0	5.0	5.0	5.0	5.0	5.0	5.0	4.89	4.43	4.17	3.82	3.62	3.35	3.19	2.97	2.84	2.66	2.55	2.40
		3.0-15.8	10	t	10.0	9.27	7.77	6.99	6.06	5.55	4.92	4.58	4.11	3.84	3.50	3.29	3.02	2.86	2.64	2.51	2.33	2.22	2.07
55m		3.0-32.3	5	t	5.0	5.0	5.0	5.0	5.0	5.0	5.0	5.0	4.45	4.3	4.09	3.87	3.58	3.41	3.18	3.04	2.85		
		3.0-16.8	10	t	10.0	9.89	8.29	7.47	6.48	5.94	5.27	4.89	4.41	4.13	3.76	3.54	3.25	3.08	2.85	2.71	2.52		
50m		3.0-35.1	5	t	5.0	5.0	5.0	5.0	5.0	5.0	5.0	5.0	5.0	4.72	4.33	4.10	3.80	3.62	3.37				
		3.0-17.7	10	t	10.0	10.0	8.78	7.91	6.87	6.30	5.59	5.19	4.68	4.39	4.00	3.77	3.47	3.29	3.05				
45m		3.0-36.9	5	t	5.0	5.0	5.0	5.0	5.0	5.0	5.0	5.0	5.0	4.99	4.58	4.34	4.02						
		3.0-18.6	10	t	10.0	10.0	9.28	8.36	7.27	6.67	5.93	5.51	4.97	4.66	4.25	4.01	3.69						
40m		3.0-37.6	5	t	5.0	5.0	5.0	5.0	5.0	5.0	5.0	5.0	5.0	5.0	4.68								
		3.0-19.0	10	t	10.0	10.0	9.48	8.54	7.43	6.82	6.06	5.63	5.08	4.77	4.35								
35m		3.0-35.0	5	t	5.0	5.0	5.0	5.0	5.0	5.0	5.0	5.0	5.0	5.0	5.0								
		3.0-19.0	10	t	10.0	10.0	9.48	8.54	7.43	6.82	6.06	5.63	5.08										
30m		3.0-30.0	5	t	5.0	5.0	5.0	5.0	5.0	5.0	5.0												
		3.0-19.0	10	t	10.0	10.0	9.48	8.54	7.43	6.82	6.06												

### Anchorage

An[m]	A1	A2	A3	A4	A5	A6	A7	A8	A9	A10
An[m]	42.0	69.0	96.0	123.0	150.0	177.0	204.0	231.0	-	-
H2 [m]	82.5	106.5	133.5	160.5	187.5	214.5	241.5	268.5	-	-

※ Over this height please contact us



### Mechanisms

	60QP25HB-G1		m/min	0 ~ 45	0 ~ 90	45kW	
		t	5	2.5			
	60LVF25KL		m/min	0 ~ 22.5	0 ~ 45	45kW	
		t	10	5			
	△		m/min	0 ~ 42	0 ~ 84	45kW	
		t	5	2.5			
	△		m/min	0 ~ 21	0 ~ 42	45kW	
		t	10	5			
	DVF	m/min	0 ~ 60		5.5kW		
	RCV95	rpm	0 ~ 0.7		2x5.5kW		
			380V 50Hz( 5%) 380V 60Hz( 5%) 440V 60Hz( 5%)		75kVA		<b>kVA</b>

※ Please consult us      △ Option