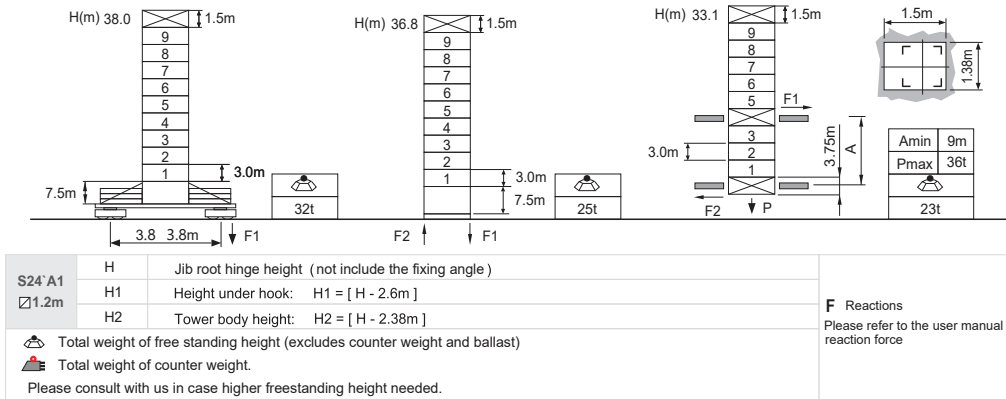


Jib root hinge height



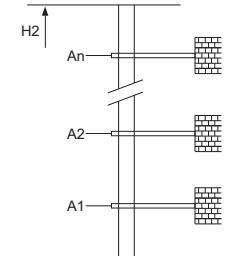
Load diagrams

R	falls	R(C _{MAX})	C _{MAX}	m	15	17	20	22	25	27	30	32	35	37	40	42	45	47	50
50m	☺	3.2~28.4	2.5	t	2.5	2.5	2.5	2.5	2.5	2.5	2.35	2.19	1.98	1.86	1.70	1.60	1.48	1.40	1.30
	☹	3.2~14.3	5	t	4.77	4.15	3.45	3.09	2.66	2.43	2.13	1.97	1.75	1.64	1.48	1.38	1.26	1.18	1.08
45m	☺	3.2~30.5	2.5	t	2.5	2.5	2.5	2.5	2.5	2.5	2.5	2.38	2.15	2.02	1.85	1.74	1.61		
	☹	3.2~15.4	5	t	5.0	4.50	3.75	3.36	2.90	2.65	2.33	2.16	1.93	1.80	1.63	1.52	1.39		
40m	☺	3.2~32.1	2.5	t	2.5	2.5	2.5	2.5	2.5	2.5	2.5	2.5	2.26	2.13	1.95				
	☹	3.2~16.8	5	t	5.0	4.74	3.95	3.55	3.06	2.80	2.47	2.28	2.04	1.91	1.73				
35m	☺	3.2~32.1	2.5	t	2.5	2.5	2.5	2.5	2.5	2.5	2.5	2.5	2.5	2.26					
	☹	3.2~16.8	5	t	5.0	4.74	3.95	3.55	3.06	2.80	2.47	2.28	2.04						
30m	☺	3.2~30.0	2.5	t	2.5	2.5	2.5	2.5	2.5	2.5	2.5	2.5							
	☹	3.2~16.8	5	t	5.0	4.74	3.95	3.55	3.06	2.80	2.47								
25m	☺	3.2~25.0	2.5	t	2.5	2.5	2.5	2.5	2.5										
	☹	3.2~16.8	5	t	5.0	4.74	3.95	3.55	3.06										
20m	☺	3.2~20.0	2.5	t	2.5	2.5	2.5												
	☹	3.2~16.3	5	t	5.0	4.74	3.95												

Anchorage

An [m]	A1	A2	A3	A4	A5	A6	A7	A8	A9	A10
	24.0	36.0	48.0	60.0	72.0	84.0	96.0	108.0	-	-
H2 [m]	49.5	61.5	73.5	85.5	97.5	106.5	118.5	130.5	-	-

※ Over this height please contact us



Mechanisms

☺	25LVF13	☺	m/min	42	63	18.5KW	360m >360m※
		t	2.5	1.25			
☹	DVF	☺	m/min	0~58		5.5kW	
		t	5.0	2.5			
☺	RCV95		rpm	0~0.8		5.5kW	
⚡			380V 50Hz(5%) 380V 60Hz(5%) 440V 60Hz(5%)	35kVA		kVA	

※ Please consult us △ Option